

ALLIED BROTHERS INTERNATIONAL

THE FINEST HARDWARE FOR THE FINEST PROJECTS



PRODUCT CATALOGUE

Manufacturers of Hardware &
Agricultural Trailer Parts

 www.alliedbros.com



ALLIED BROTHERS INTERNATIONAL

— THE FINEST HARDWARE FOR THE FINEST PROJECTS —





THE CONTENT

Company Profile	04
About Company	05
Mission & Vision	06
Linch Pin	08-10
Hair Pin, Split Pin & Safety Pin	11-13
Conversion Bushing	14-15
Lift Arm Pins	16
Top Link Pins	17
Hitch Pin With Hair Pin	18-19
Implement Mounting Pins	20-22
Top Link Pins - Headless	23
Stabilizer Pins & Hitch Pin	24-26
Stabiliser Eye Bolt & Shackle Pin	27
Chains	28-29
Stabiliser Adjuster	30
Top Link Assembly	31-32
Top Link Ends	33-35
Guided Cone	36
Balls	37-38
Hitch Balls	39
Weld On Ball Ends	40-48
Draw Bar	49-50
Straight Clevises	51-52
Euro Bracket	54-55
Towing Eye	57-58
Drop Closure	59
D Ring	60
Combine Guards	61 -70

COMPANY PROFILE



By closely studying the growing demand for spare parts used in agricultural machinery and equipment, we started Allied Brothers International to offer a reliable collection of high-quality spares. With years of experience in the industry, we have consistently delivered great quality and moderately priced products, including 3 Point Linkage Parts, Implement Parts, Tractor Trailer Parts, Combine Harvester Parts. Strategically based in Ludhiana, Punjab, India - a renowned industrial hub - we process and supply our premium-grade products to customers across the globe.





ABOUT COMPANY

Allied Brothers International is an experienced and skilled team of agriculture spare parts manufacturers in Ludhiana, Punjab, India. Depending on our clients' unique needs, we manufacture and supply agriculture parts across the globe in various sizes in terms of quality standards.

 www.alliedbros.com





MISSION

We are committed to empowering industries with innovative, high-quality solutions that drive growth and efficiency. By setting new standards in entrepreneurship and sustainability, we strive to create a lasting impact on global markets.

& VISION



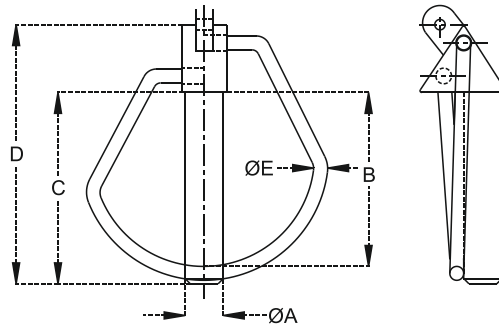
We aspire to inspire entrepreneurship and set new industry benchmarks for future generations. By fostering innovation, leadership, and sustainable growth, we aim to shape a future where businesses thrive with excellence, integrity, and global impact.





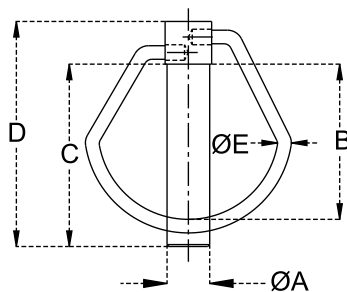
Linkage Parts

LINCH PINS - FORGED



Part Number	Dia. ØA (mm)	Dia. ØB (mm)	Dim. C (mm)	Dim. D (mm)	Dim. ØE (mm)
L-LPF-0001	11	48	52	70	4
L-LPF-0002	15	48	60	82	4

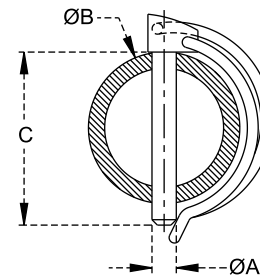
LINCH PINS PEAR SHAPE



➤ Trivalent Zinc Plating.

Part Number	Dia. ØA (mm)	Dim. B (mm)	Dim. C (mm)	Dim. D (mm)	Dia. ØE (mm)	Ref. Number
L-LPPS-0013	4.5	23	28.5	35	2	00115
L-LPPS-0014	4.5	24	38	44	2	
L-LPPS-0015	4.5	30	38	44	2	
L-LPPS-0016	5	35	39.5	46	2.5	00099
L-LPPS-0017	6	32	40	48	2.4	
L-LPPS-0018	6	36	46.5	54	3	00100
L-LPPS-0019	7	40	45	54	2.3	
L-LPPS-0020	8	40	46	56	3.5	00102
L-LPPS-0021	9	40	45	56	3.5	00103
L-LPPS-0022	10	40	46	58	3.5	00104
L-LPPS-0023	11	40	46	58	3.5	00105
L-LPPS-0024	11	48	53	78	4	
L-LPPS-0025	15	56.5	62	84.5	4	

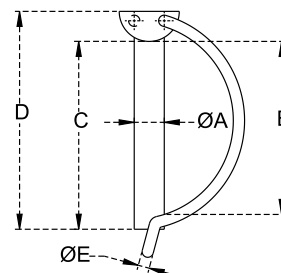
PIPE LINCH PINS



➤ Trivalent Zinc Plating.

Part Number	Dia. ØA (mm)	Dim. B (mm)	Dim. C (mm)	Ref. Number
L-LPP-0036	4.5	28	32	S-12793
L-LPP-0037	6	36	40	S-12794
L-LPP-0038	8	34	38	S-12795
L-LPP-0039	8	40	45	S-12796
L-LPP-0040	8	55	60	S-12797
L-LPP-0041	10	45	50	S-12798
L-LPP-0042	10	55	60	S-12799

PIPE LINCH PINS - PRESSED HEAD

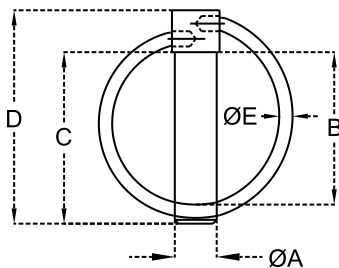


➤ Trivalent Zinc Plating.

Part Number	Dia. ØA (mm)	Dim. B (mm)	Dim. C (mm)	Dim. D (mm)	Dia. ØE (mm)
L-LPPH-0053	7	34	33	39	2.5
L-LPPH-0054	7	38	37	43	2.7
L-LPPH-0055	7	42	41	47	2.7
L-LPPH-0056	8	34	33	39	2.5
L-LPPH-0057	8	38	37	43	2.7
L-LPPH-0058	8	42	41	47	2.7
L-LPPH-0059	8	46	45	51	3
L-LPPH-0060	10	34	33	39	2.5
L-LPPH-0061	10	38	37	43	2.7
L-LPPH-0062	10	42	41	47	2.7
L-LPPH-0063	10	46	45	51	3

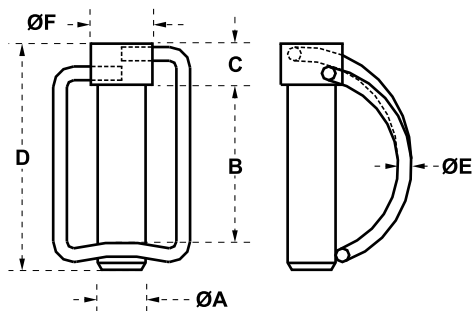
➤ Trivalent Zinc Plating.

LINCH PINS



Part Number	Dia. ØA (mm)	Dim. B (mm)	Dim. C (mm)	Dim. D (mm)	Dia. ØE (mm)	Ref. Number
L-LP-0074	4.5	29	35	45	2.5	10524
L-LP-0075	4.5	33	42	51	3	
L-LP-0076	4.76	28.6	35	44	3	
L-LP-0077	5	35	40	48	2.5	10518
L-LP-0078	6	33	40	49	3.3	
L-LP-0079	6	36.5	45	55	3	10519
L-LP-0080	6.35	36.5	45	54	3.2	
L-LP-0081	7	36.5	45	55	3.3	
L-LP-0082	8	33	40	49	3.3	
L-LP-0083	8	36.5	45	54	3	10520
L-LP-0084	8	39	60	69	3.6	
L-LP-0085	8	60	70	80	3.5	
L-LP-0086	9	33	40	50	3.3	
L-LP-0087	9	36.5	45	55	3.5	10521
L-LP-0088	9	63	70	81	3.5	
L-LP-0089	9.5	36	45	56	3.3	
L-LP-0090	9.5	39	51	62	3.3	
L-LP-0091	10	33	40	51	3.5	
L-LP-0092	10	36.5	45	56	3.5	
L-LP-0093	10	40	45	56	3.5	10522
L-LP-0094	11	39	51	61	3.5	
L-LP-0095	11	40	56	56	3.5	10523
L-LP-0096	12	36.5	45	56	3.5	

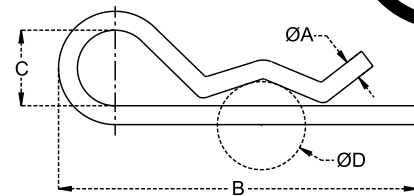
LINCH PINS (SQUARE) - WITH CHAIN



➤ Trivalent Zinc Plating.

Part Number	Dia. ØA (mm)	Dim. B (mm)	Dim. C (mm)	Dim. D (mm)	Dia. ØE (mm)	Dim. F (mm)	Ref. Number
L-LPSC-0107	14	47	12	67	4	18	00247
L-LPSC-0108	16	57	13	70	4	20	00248
L-LPSC-0109	19	60	15	90	5	25	00463

HAIR PINS



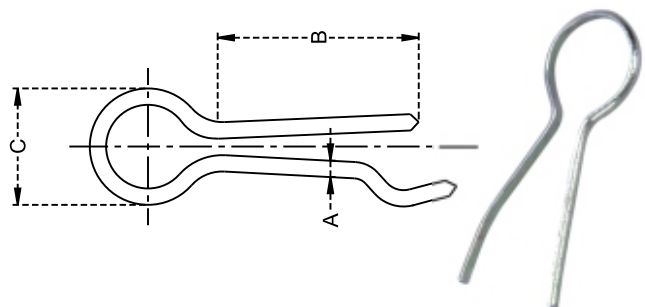
- Made of Spring Steel.
- Trivalent Zinc Plating.

Part Number	Dia. ØA (mm)	Dim. B (mm)	Dim. C (mm)	Dia. ØD (mm)	Ref. Number
L-HRP-0001	1.8	35	6.5	6 to 8	00679
L-HRP-0002	2	44	11	10 to 12	
L-HRP-0003	2	50	12	10 to 12	00110
L-HRP-0004	2	57	13	10 to 12	
L-HRP-0005	2.5	46	13	10 to 13	
L-HRP-0006	2.5	58	14	10 to 13	00111
L-HRP-0007	3	52	14	12 to 16	
L-HRP-0008	3	61	18	12 to 16	00112
L-HRP-0009	3	65	13	12 to 16	
L-HRP-0010	3	70	13	12 to 16	
L-HRP-0011	3	85	13	12 to 16	
L-HRP-0012	3.5	71	18	16 to 23	
L-HRP-0013	3.5	80	18	15 to 21	00113
L-HRP-0014	3.5	84	18	16 to 30	
L-HRP-0015	4	76	18	16 to 30	00114
L-HRP-0016	4	83	18	16 to 30	
L-HRP-0017	4	88	18	16 to 30	
L-HRP-0018	4	100	22	20 to 30	
L-HRP-0019	4	108	18	14 to 20	
L-HRP-0020	4.5	83	20	20 to 30	
L-HRP-0021	4.5	90	20	16 to 30	
L-HRP-0022	4.5	93	20	20 to 30	
L-HRP-0023	5	100	24	20 to 35	00116
L-HRP-0024	5	106	24	20 to 35	
L-HRP-0025	5	120	34	20 to 30	
L-HRP-0026	6	103	30	28 to 45	
L-HRP-0027	6	114	24	28 to 45	00118
L-HRP-0028	6	120	30	28 to 45	
L-HRP-0029	6	130	30	28 to 45	
L-HRP-0030	7	115	45	30 to 45	
L-HRP-0031	7	160	32	30 to 45	
L-HRP-0032	7	163	32	30 to 45	
L-HRP-0033	8	98	52	30 to 45	
L-HRP-0034	8	156	39	45 to 60	
L-HRP-0035	8	162	42	45 to 60	00143
L-HRP-0036	8	187	39	30 to 45	

HAIR CLIPS

- Trivalent Zinc Plating.

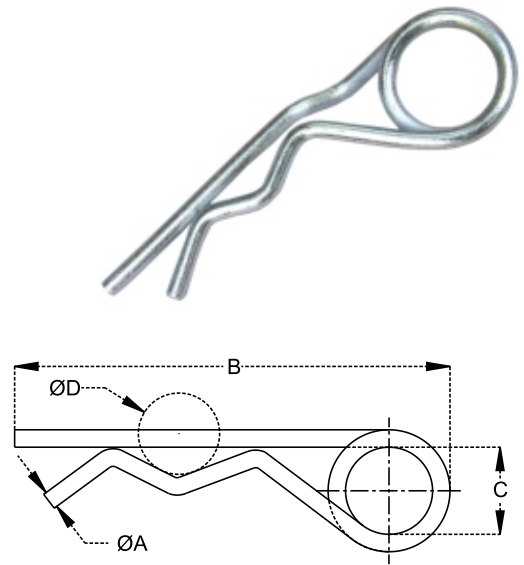
Part Number	Dim. A (mm)	Dim. B (mm)	Dim. C (mm)	Ref. Number
L-HRC-0047	3 X 1.5	38	17	00120
L-HRC-0048	5 X 2.5	56	57	00121



DOUBLE COIL HAIR PIN

► Trivalent Zinc Plating.

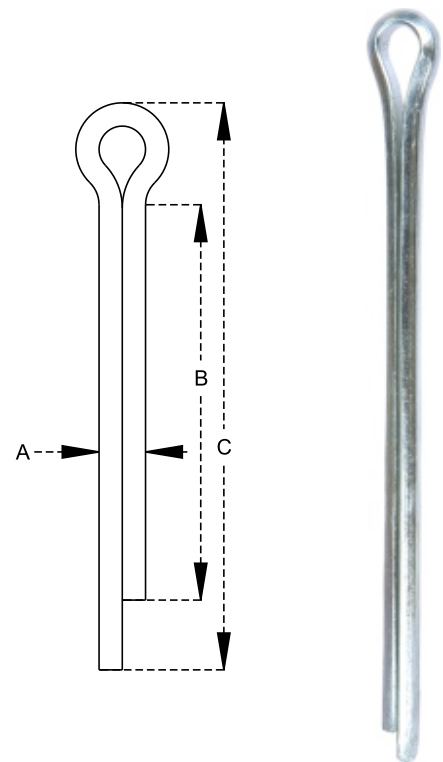
Part Number	Dia. ØA (mm)	Dim. B (mm)	Dim. C (mm)	Dia. ØD (mm)	Ref. Number
L-HRPC-0059	2	65	9	10 to 12	
L-HRPC-0060	3	76	18	10 to 19	00913
L-HRPC-0061	3.5	88	20	12 to 16	
L-HRPC-0062	4	77	18	16 to 30	
L-HRPC-0063	4	99	22	17 to 25	00469
L-HRPC-0064	4	98	22	16 to 30	
L-HRPC-0065	5	112	26	24 to 35	00486
L-HRPC-0066	5	116	22	17 to 28	
L-HRPC-0067	5	200	22	25 to 32	
L-HRPC-0068	6	120	30	28 to 45	
L-HRPC-0069	6	150	30	28 to 45	00487
L-HRPC-0070	7	162	30	30 to 45	
L-HRPC-0071	8	162	45	45 to 60	
L-HRPC-0072	10	162	45	45 to 60	



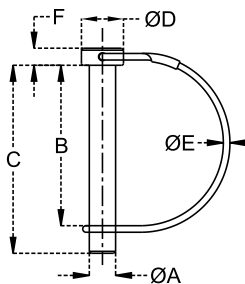
SPLIT PINS

► Trivalent Zinc Plating.

Part Number	Dim. A (mm)	Dim. B (mm)	Dim. C (mm)
L-SPP-0083	1.6	20	28
L-SPP-0084	1.6	25	33
L-SPP-0085	2	20	28
L-SPP-0086	2	25	33
L-SPP-0087	2	28	35
L-SPP-0088	2	30	38
L-SPP-0089	2	32	40
L-SPP-0090	2	40	50
L-SPP-0091	2.5	20	28
L-SPP-0092	2.5	40	50
L-SPP-0093	3	50	58
L-SPP-0094	3.2	25	35
L-SPP-0095	3.2	40	50
L-SPP-0096	4	25	35
L-SPP-0097	4	32	45
L-SPP-0098	4	36	48
L-SPP-0099	4	40	50
L-SPP-0100	4	60	70
L-SPP-0101	5	40	52
L-SPP-0102	5	50	63
L-SPP-0103	5	70	85
L-SPP-0104	6	60	75
L-SPP-0105	6	70	85
L-SPP-0106	6	80	98
L-SPP-0107	6.3	50	64
L-SPP-0108	6.3	70	85
L-SPP-0109	6.3	80	98
L-SPP-0110	7	60	80
L-SPP-0111	7	70	90
L-SPP-0112	8	63	87
L-SPP-0113	8	80	104
L-SPP-0114	8	100	124
L-SPP-0115	8	125	150
L-SPP-0116	10	63	91
L-SPP-0117	10	125	153
L-SPP-0118	13	140	175
L-SPP-0119	15	125	160



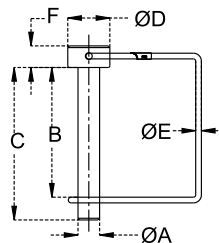
PTO PINS - ROUND



➤ Trivalent Zinc Plating.

Part Number	Dia. ØA (mm)	Dim. B (mm)	Dim. C (mm)	Dia. ØD (mm)	Dia. ØE (mm)	Dim. F (mm)	Ref. Number
L-PTOPR-0130	6	50	60	12	2.5	6	
L-PTOPR-0131	6	57	67	12	2.5	6	
L-PTOPR-0132	7	45	50	16	2.5	6	09354
L-PTOPR-0133	8	38	45	14	2.5	7	02913
L-PTOPR-0134	8	60	73	15	2.5	7	01369
L-PTOPR-0135	9.5	57	67	16	2.5	10	
L-PTOPR-0136	10	38	45	15	2.5	7	02914
L-PTOPR-0137	10	60	70	19	2.5	10	01370
L-PTOPR-0138	11	45	55	19	2.5	10	
L-PTOPR-0139	11	89	99	19	2.5	10	
L-PTOPR-0140	12	67	75	20	2.5	10	
L-PTOPR-0141	12	70	90	18	2.5	7	

PTO PINS - SQUARE



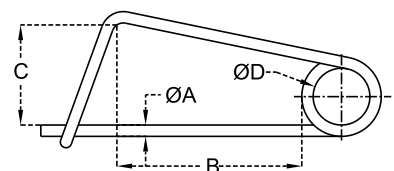
➤ Trivalent Zinc Plating.

Part Number	Dia. ØA (mm)	Dim. B (mm)	Dim. C (mm)	Dia. ØD (mm)	Dia. ØE (mm)	Dim. F (mm)	Ref. Number
L-PTOPS-0152	6	57	67	12	2.5	6	56741
L-PTOPS-0153	6.35	63.5	70	12	2.5	6	
L-PTOPS-0154	6.35	76	84	12.5	2.5	6	
L-PTOPS-0155	8	63	70	15	2.5	7	56742
L-PTOPS-0156	9.5	57	67	18.5	2.5	9.5	56743
L-PTOPS-0157	10	85	90	18	2.5	8	
L-PTOPS-0158	12	67	75	20	2.5	10	

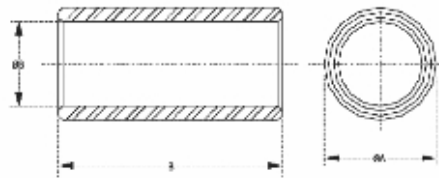
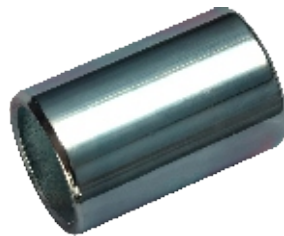
SAFETY PINS

➤ Trivalent Zinc Plating.

Part Number	Dia. ØA (mm)	Dim. B (mm)	Dim. C (mm)	Dia. ØD (mm)	Ref. Number
L-SP-0169	3	60	35	20	00122
L-SP-0170	4	100	55	33	00107
L-SP-0171	5	90	42	31	00108
L-SP-0172	6	100	50	30	00109

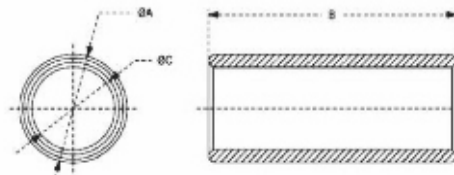
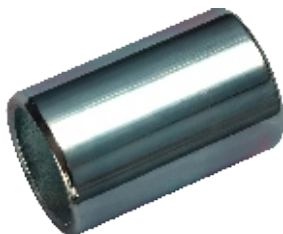


CONVERSION BUSHING



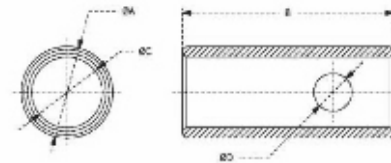
Part Number	Outer Dia. ØA (mm, inches)	Outer Dia. ØB (mm, inches)	Length C (mm, inches)	Weight (kg)
L-CB-0001	25.40 / 1"	19.50 / 0.75"	50.80 / 2"	0.18
L-CB-0002	25.40 / 1"	19.05 / 0.75"	41.20 / 1.62"	0.14
L-CB-0003	31.75 / 1.25"	24.40 / 1"	50.80 / 2"	0.24
L-CB-0004	27.57 / 22.22	44.50 / 0.87"	1.75 / 0.18"	000351/8821
L-CB-0005	28.57 / 1.12"	22.22 / 0.87"	35 / 1.38"	0.18
L-CB-0006	36.50 / 1.44"	28.57 / 1.12"	44.45 / 1.75"	0.29
L-CB-0007	36.50 / 1.44"	28.57 / 1.12"	69.80 / 2.75"	0.50
L-CB-0008	36.50 / 1.44"	28.57 / 1.12"	80.50 / 3.25"	0.52
L-CB-0009	19.05 / 0.75"	15.87 / 0.62"	41.27 / 1.62"	0.10
L-CB-0010	24.40 / 1"	19.05 / 0.75"	49.21 / 1.94"	0.20
L-CB-0011	31.75 / 1.25"	25.40 / 1"	49.21 / 1.94"	0.20
L-CB-0012	22.22 / 0.87"	15.87 / 0.62"	34.92 / 1.37	0.10

CONVERSION BUSHING



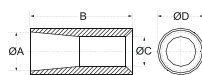
Part Number	Dia. ØA (mm)	Dia. ØB (mm)	Dia. ØC (mm)
L-CB-0013	19	41	16
L-CB-0014	22	35	16
L-CB-0015	25.4	41	19
L-CB-0016	25.4	50.8	19
L-CB-0017	28.4	44	22.4
L-CB-0018	28.4	63	22.2
L-CB-0019	28.6	35	22.2
L-CB-0020	28.6	44	22.2
L-CB-0021	28.6	50.8	22.2
L-CB-0022	32	50.8	22.2
L-CB-0023	36.5	44.5	25.4
L-CB-0024	36.5	51	28.6
L-CB-0025	36.5	64	28.6
L-CB-0026	37.8	44	28.6

CONVERSION BUSHING

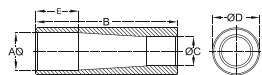


Part Number	Dia. ØA (mm)	Dia. ØB (mm)	Dia. ØC (mm)	Dia. ØD (mm)
L-CB-0027	28	64	22	12
L-CB-0028	36.5	63.5	28.6	17

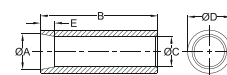
TINES BUSHING



Type - A



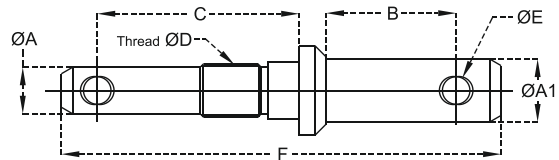
Type - B



Type - c

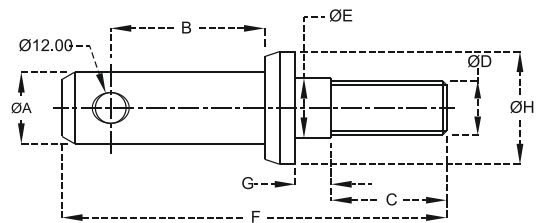
Part Number	A	B	C	D	E	F
L-TB-0029	34.50	110	24.50	50		A
L-TB-0030	42.00	110	32.00	50		A
L-TB-0031	44.00	120	32.00	57		A
L-TB-0032	43.5	165	34	55	50	B
L-TB-0033	35	115	27	42.4	20	C

LIFT ARM PINS - DUAL MOUNTING



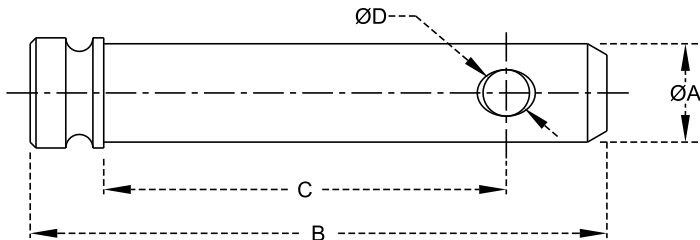
Part Number	Dia. ØA (mm)	Dia. ØA1 (mm)	Dim. B (mm)	Dim. C (mm)	Thread ØD (mm)	Dia. ØE (mm)	Dim. F (mm)
L-LAP-0001	22	28	58	90	24 x 2	12	195
L-LAP-0002	22	28	58	90	27 x 3	12	195

LIFT ARM PINS



Part Number	Dia. ØA (mm)	Dim. B (mm)	Dim. C (mm)	Thread ØD (mm)	Dia. ØE (mm)	Dim. F (mm)	Dim. G (mm)	Dim. ØH (mm)
L-LAP-0013	22	46	45	18x1.5	18	130	5	37
L-LAP-0014	22	50	40	20x1.5	20	130	5	38
L-LAP-0015	22	50	40	22x1.5	22	140	14	38
L-LAP-0016	22	50	40	22x1.5	28	140	14	38
L-LAP-0017	22	60	40	22x1.5	25	150	20	32
L-LAP-0018	25	60	40	22x105	25	150	20	40
L-LAP-0019	25	60	40	22x1.5	28	150	20	38
L-LAP-0020	28	50	30	30x2	30	155	50	50
L-LAP-0021	28	60	45	22x1.5	22	150	14	44
L-LAP-0022	28	55	45	22x1.5	24	150	14	42
L-LAP-0023	28	55	45	24x1.5	24	150	15	43
L-LAP-0024	28	60	40	22x1.5	28	150	20	43
L-LAP-0025	28	55	45	27x1.5	28	150	14	42
L-LAP-0026	28	58	48	27x1.5	27	147	10	43
L-LAP-0027	36.5	61	60	27x1.5	27	165	11	50

TOP LINK PINS

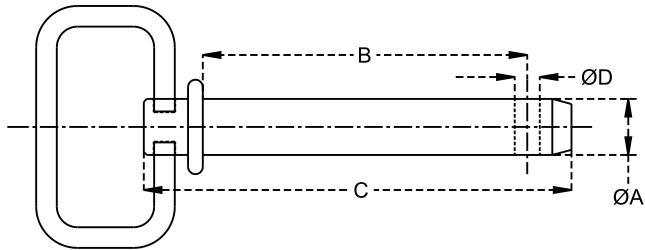


- Material C-20/C-40.
- Trivalent Zinc Plating.

Part Number	Dia. ØA (mm)	Dim. B (mm)	Dim. C (mm)	Dia. ØD (mm)	Ref. Number
L-TLP- 0001	15.9	113	76	8.3	
L-TLP- 0002	15.9	112.7	82.2	8.3	
L-TLP- 0003	19	90	52	12	
L-TLP- 0004	19	90	57	12	
L-TLP- 0005	19	95	65	10	
L-TLP- 0006	19	113	76	12	12419
L-TLP- 0007	19	117	85	10	
L-TLP- 0009	19	123	86	12	
L-TLP- 0010	19	125	95	12	03806
L-TLP- 0011	19	127	92	12	
L-TLP- 0012	19	133	95	12	
L-TLP- 0013	19	135	102.5	8.5	
L-TLP- 0014	19	135	105	10	
L-TLP- 0015	19	138	103	12	09072
L-TLP- 0016	19	150	116	12	
L-TLP- 0017	19	155	125	10	
L-TLP- 0018	19	164	127	12	
L-TLP- 0019	25	132	95	12	
L-TLP- 0020	25	136	105	11	
L-TLP- 0021	25	141	105	12	
L-TLP- 0022	25	145	110	11	
L-TLP- 0023	25	156	125	11	
L-TLP- 0024	25	165	126	12	
L-TLP- 0025	25	180	136	12	
L-TLP- 0026	25	178	145	11	
L-TLP- 0027	25.4	123	86	12	
L-TLP- 0028	25.4	135	95	12	03807
L-TLP- 0029	25.4	148	110	12	12422
L-TLP- 0030	25.4	154	116	12	
L-TLP- 0031	25.4	180	142	12	12421

Part Number	Dia. ØA (mm)	Dim. B (mm)	Dim. C (mm)	Dia. ØD (mm)	Ref. Number
L-TLP- 0032	28	151	103	12	
L-TLP- 0033	19	175	145	10	
L-TLP- 0034	19	197	165	10	
L-TLP- 0035	20	117	83	12	
L-TLP- 0036	22	78	39	12	
L-TLP- 0037	22	114	76	12	
L-TLP- 0038	22	114	78	8.3	
L-TLP- 0039	22	118	85	11	
L-TLP- 0040	22	132	94	12	
L-TLP- 0041	22	136	105	12	
L-TLP- 0042	22	140	110	12	
L-TLP- 0043	22	158	125	11	
L-TLP- 0044	22	190	149	12	
L-TLP- 0045	22	178	145	11	
L-TLP- 0046	22	221	184	12	09073
L-TLP- 0047	25	115	76	12	
L-TLP- 0048	25	136	85	11	
L-TLP- 0049	28	156	125	12	
L-TLP- 0050	28	165	130	12	09074
L-TLP- 0051	28	178	145	12	
L-TLP- 0052	28.6	133	95	12	
L-TLP- 0053	28.6	197	159	12	
L-TLP- 0054	31	165	125	12	09075
L-TLP- 0055	31.7	165.1	118.7	12	
L-TLP- 0056	32	152	105	12	
L-TLP- 0057	32	154	105	12	
L-TLP- 0058	32	164	125	12	
L-TLP- 0059	32	175	136	12	

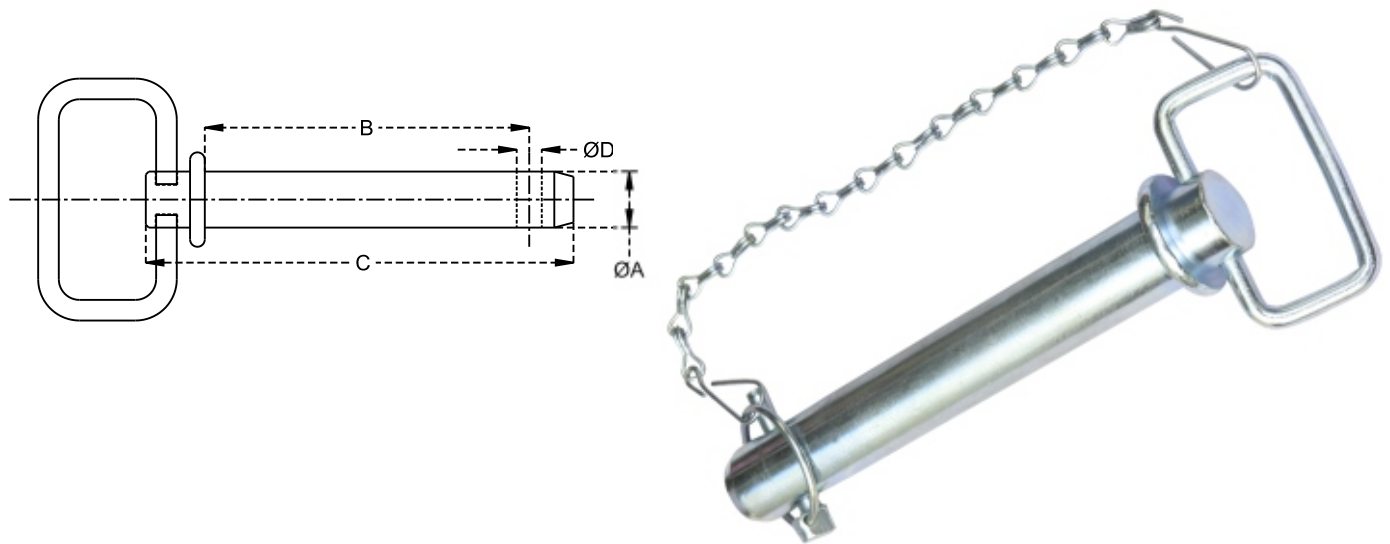
HITCH PINS - WITH HAIR PIN



- Material C-20/C-40.
- Trivalent Zinc Plating.

Part Number	Dia. ØA (mm)	Dim. B (mm)	Dim. C (mm)	Dia. ØD (mm)
L-HPH-0001	9.5	104	141	3
L-HPH-0002	9.5	110	147	3
L-HPH-0003	12.7	92	127	4
L-HPH-0004	12.7	105	142	3
L-HPH-0005	12.7	110	147	4
L-HPH-0006	12.7	148	185	3
L-HPH-0007	12.7	162	199	4
L-HPH-0008	15.9	105	136	4
L-HPH-0009	15.9	149	186	3.5
L-HPH-0010	16	110	147	4
L-HPH-0011	16	162	199	4
L-HPH-0012	19	98	130	4.5
L-HPH-0013	19	105	142	5
L-HPH-0014	19	110	147	4.5
L-HPH-0015	19	157	194	4.5
L-HPH-0016	19	162	203	4.5
L-HPH-0017	22	110	147	5
L-HPH-0018	22	157	194	5
L-HPH-0019	22	162	199	5
L-HPH-0020	22	181	218	5
L-HPH-0021	25	103	128	5
L-HPH-0022	25	110	147	6
L-HPH-0023	25	157	194	6
L-HPH-0024	25	162	199	6
L-HPH-0025	25	181	214	6
L-HPH-0026	25	183	220	6
L-HPH-0027	25.4	118	155	6
L-HPH-0028	28	183	220	7
L-HPH-0029	28.6	162	199	6.5
L-HPH-0030	28.6	181	118	6.5
L-HPH-0031	31.75	162	199	7
L-HPH-0032	32	187	220	7

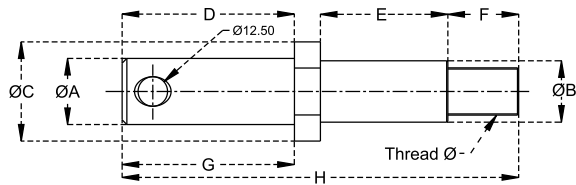
HITCH PINS - WITH LINCH PIN & CHAIN



- Material C-20/C-40.
- Trivalent Zinc Plating.

Part Number	Dia. ØA (mm)	Dim. B (mm)	Dim. C (mm)	Dia. ØD (mm)	Ref. Number
L-HPLC-0043	12.7	92.5	127	6.5	
L-HPLC-0044	12.7	111	146	6.5	
L-HPLC-0045	12.7	165	200	6.5	
L-HPLC-0046	15.9	103	136	6.5	
L-HPLC-0047	15.9	111	146	6.5	
L-HPLC-0048	15.9	165	200	6.5	
L-HPLC-0049	19	103	140	6.5	
L-HPLC-0050	19	110	145	8	00001
L-HPLC-0051	19	115	153	12	
L-HPLC-0052	19	165	205	8	00002
L-HPLC-0053	22	115	153	6.5	
L-HPLC-0054	22	128.5	150	6.5	
L-HPLC-0055	22	165	205	10	00003
L-HPLC-0056	25	165	205	10	00004
L-HPLC-0057	25	189	227	12	
L-HPLC-0058	28	100	127	12	
L-HPLC-0059	28	120	160	10	00093
L-HPLC-0060	28	190.5	228	6.5	
L-HPLC-0061	28	165	205	10	00009
L-HPLC-0062	30	183	221	12	
L-HPLC-0063	31.75	162	204	6.5	
L-HPLC-0064	31.75	189	227	12	
L-HPLC-0065	32	165	200	10	00005
L-HPLC-0066	32	190.5	228	6.5	
L-HPLC-0067	35	189	227	12	
L-HPLC-0068	38	187	227	12	

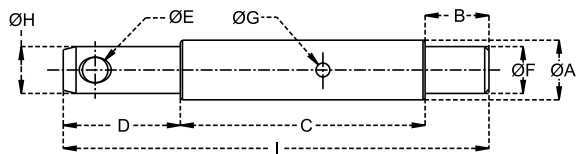
IMPLEMENT MOUNTING PINS



- Material C-20/C-40.
- Trivalent Zinc Plating.

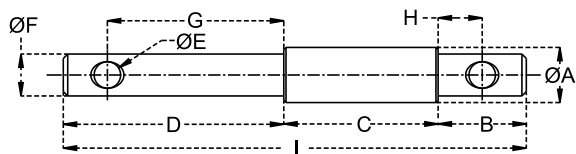
Part Number	Dia. ØA (mm)	Dia. ØB (mm)	Dia. ØC (mm)	Dim. D (mm)	Dim. E (mm)	Dim. F (mm)	Dim. G (mm)	Dim. H (mm)	Dia. ØI (mm)	Thread Dia. Ø (mm)	Ref. Number
L-IMP-0001	22	22	32	70	49	30	55	160	12.5	20 x 1.5	09559
L-IMP-0002	28	26	42	73	54	30	60	168	12.5	20 x 1.5	09560

IMPLEMENT MOUNTING PINS - DOUBLE



- Material C-20/C-40.
- Trivalent Zinc Plating.

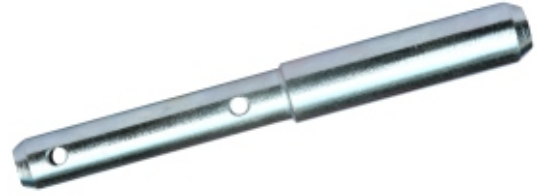
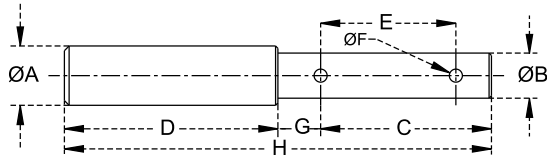
Part Number	Dia. ØA (mm)	Dim. B (mm)	Dim. C (mm)	Dim. D (mm)	Dia. ØE (mm)	Dia. ØF (mm)	Dia. ØG (mm)	Dia. ØH (mm)	Dim. I (mm)	Ref. Number
L-IMPD-0003	28	30	115	55	12	22	6.5	22	200	01629
L-IMPD-0004	28	30	115	55	12	22	6.5	25	200	03146



- Material C-20/C-40.
- Trivalent Zinc Plating.

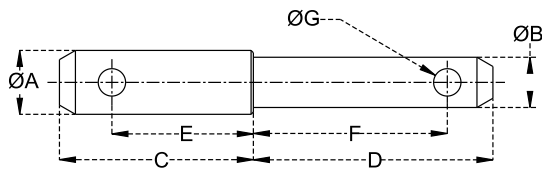
Part Number	Dia. ØA (mm)	Dim. B (mm)	Dim. C (mm)	Dim. D (mm)	Dia. ØE (mm)	Dia. ØF (mm)	Dim. G (mm)	Dim. H (mm)	Dim. I (mm)	Ref. Number
L-IMPD-0005	25	40	70	100	12	19	80	20	210	01611
L-IMPD-0006	25	38	96	78	12	19	62	22	212	
L-IMPD-0007	25	26	66	78	6.5	19	70	18	170	
L-IMPD-0008	28	35	75	90	12	22	75	20	200	
L-IMPD-0009	28	40	70	100	12	22	80	20	210	01620
L-IMPD-0010	28	40	90	100	12	22	80	20	230	
L-IMPD-0011	28.6	40	89	100	12	22.2	80	20	220	
L-IMPD-0012	32	40	115	95	12	25	81	26	250	
L-IMPD-0013	36.5	36	150	91	12	28	81	26	277	
L-IMPD-0014	36.5	45	150	95	12	28	80	28	290	

IMPLEMENT MOUNTING PINS



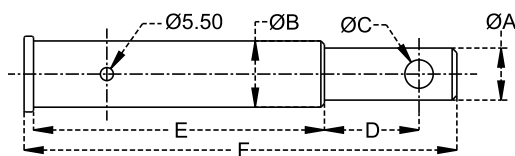
- Material C-20/C-40.
- Trivalent Zinc Plating.

Part Number	Dia. ØA (mm)	Dia. ØB (mm)	Dim. C (mm)	Dim. D (mm)	Dim. E (mm)	Dia. ØF (mm)	Dim. G (mm)	Dim. H (mm)	Ref. Number
L-IMP-0015	25	19	80	80	53	5	18	160	
L-IMP-0016	19	16	82	74	55	5	16.5	156	
L-IMP-0017	22	16	88	80	68	5	12	168	
L-IMP-0018	25	19	81	85	53	5	18	166	
L-IMP-0019	25	19	90	90	57	5	18	180	01628
L-IMP-0020	28	22	90	90	57	5	18	180	01627
L-IMP-0021	28	22	85	90	50	6	16.5	75	
L-IMP-0022	32	25	95	83	62	6.5	18	178	
L-IMP-0023	32	25	92	80	55	6.5	22	172	



- Material C-20/C-40.
- Trivalent Zinc Plating.

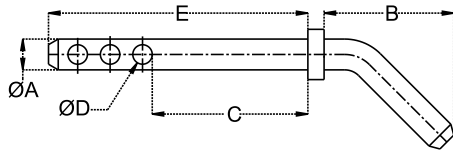
Part Number	Dia. ØA (mm)	Dia. ØB (mm)	Dim. C (mm)	Dim. D (mm)	Dim. E (mm)	Dia. ØF (mm)	Dim. G (mm)	Ref. Number
L-IMP-0024	28	22	62.5	147	47	70.5	12	
L-IMP-0025	28	22	76.5	181	60	88	12	
L-IMP-0026	28	22	85	190	62	85	12	01639
L-IMP-0027	28	22	103	181	87.3	60	12	
L-IMP-0028	28	22	120	176	92	39	12	
L-IMP-0029	28.6	22	76	181	60	87.3	12	
L-IMP-0030	34	28	61	141	43.5	62	12	



- Material C-20/C-40.
- Trivalent Zinc Plating.

Part Number	Dia. ØA (mm)	Dia. ØB (mm)	Dia. ØC (mm)	Dim. D (mm)	Dim. E (mm)	Dim. F (mm)	Ref. Number
L-IMP-0031	22	28	12	40	122	183	01612
L-IMP-0032	22	28	12	40	112	172	01613

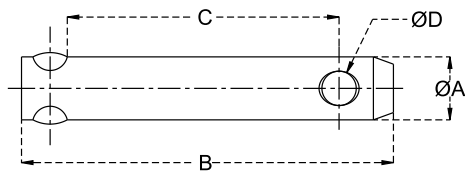
IMPLEMENT MOUNTING PINS - BENT



- Material C-20/C-40.
- Trivalent Zinc Plating.

Part Number	Dia. ØA (mm)	Dim. B (mm)	Dim. C (mm)	Dia. ØD (mm)	Dim. E (mm)	Ref. Number
L-IMPB-0033	19	90	95	12	160	09078
L-IMPB-0033	22	90	95	12	160	09079

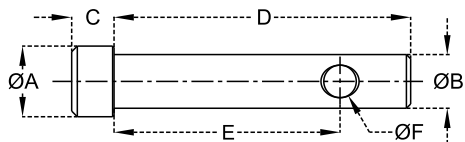
KNOTCHING PINS



- Material C-20/C-40.
- Trivalent Zinc Plating.

Part Number	Dia. ØA (mm)	Dim. B (mm)	Dim. C (mm)	Dia. ØD (mm)	Ref. Number
L-KP-0001	22	130	93	12	10127
L-KP-0002	28	143	100	12	10128

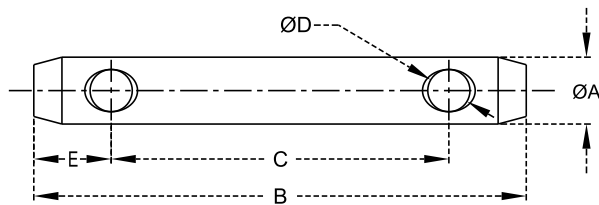
WELD ON LINK PINS



- Material C-20/C-40.
- Trivalent Zinc Plating.

Part Number	Dia. ØA (mm)	Dia. ØB (mm)	Dim. C (mm)	Dim. D (mm)	Dim. E (mm)	Dia. ØF (mm)	Ref. Number
L-WOLP-0001	25	19	15	105	80	11.5	04370
L-WOLP-0002	28	22	15	80	60	11.5	01447
L-WOLP-0003	32	25	15	110	85	11.5	04371
L-WOLP-0004	34	28	15	80	60	11.5	01399

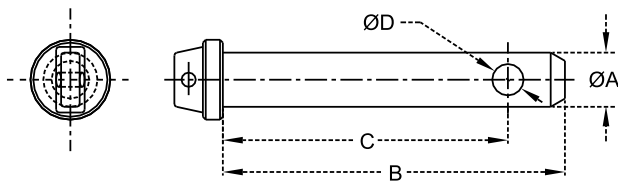
TOP LINK PINS - HEADLESS



- Material C-20/C-40.
- Trivalent Zinc Plating.

Part Number	Cat.	Dia. ØA (mm)	Dim. B (mm)	Dim. C (mm)	Dia. ØD (mm)	Dim. E (mm)	Ref. Number
L-TLPH-0001	1	19	140	96	12	22	00270
L-TLPH-0002	1	19	170	126	12	22	00272
L-TLPH-0003	1	19	207	163	12	22	00273
L-TLPH-0004	1	19	254	210	12	22	00261
L-TLPH-0005	-	22	140	96	12	22	09076
L-TLPH-0006	-	22	170	126	12	22	09077
L-TLPH-0007	2	25	144	100	12	22	00274
L-TLPH-0008	2	25	164	120	12	22	00275
L-TLPH-0009	2	25	210	166	12	22	00276
L-TLPH-0010	2	25	254	210	12	22	00187
L-TLPH-0011	2	25	294	250	12	22	00279

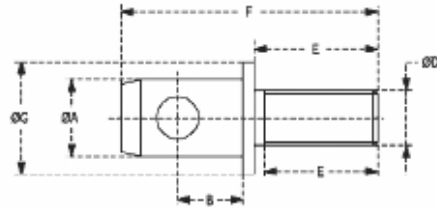
TOP LINK PINS - With Linch Pin & Chain



- Material C-20/C-40.
- Trivalent Zinc Plating.

Part Number	Dia. ØA (mm)	Dim. B (mm)	Dim. C (mm)	Dia. ØD (mm)	Ref. Number
L-TLPLP-0022	14.3	84	73	6	
L-TLPLP-0023	19	92	77	6	
L-TLPLP-0024	19	120	100	8	00178
L-TLPLP-0025	19	120	108	8	
L-TLPLP-0026	25	120	98	8	
L-TLPLP-0027	25	120	100	11	00179

STABILIZER PINS



Part Number	Dia. ØA (mm)	Dim. B (mm)	Dim. C (mm)	Thread ØD (mm)	Dia. ØE (mm)	Dim. ØF (mm)	Dim. G (mm)	Dim. H (mm)	Dim. I (mm)
L-SLP-0001	19	19	28.6	3/4" UNF	35	73	27	27	38
L-SLP-0002	22	17	28.6	5/8" UNF	35	67	29	15.9	35
L-SLP-0003	22	18.7	28.6	5/8" UNF	35	73	29.50	15.9	41
L-SLP-0004	22.2	32	28.6	5/8" UNF	35	79	29	15.9	47

HITCH PIN WITH RED HANDLE (VINYL COATING)



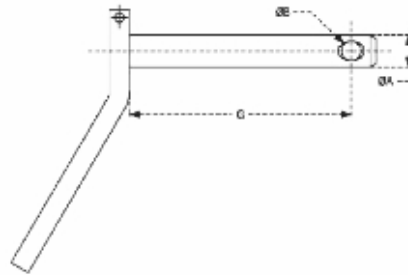
Part Number	Dia. ØA (mm)	Dia. ØB (mm)	Dia. ØC (mm)	Weight (kg.)
L-HPRED-0001	12.70	5.0	92.07	0.23
L-HPRED-0002	15.87	6.7	101.60	0.35
L-HPRED-0003	15.87	6.7	139.70	0.45
L-HPRED-0004	19.05	6.7	101.60	0.47
L-HPRED-0005	19.05	6.7	165.10	0.63
L-HPRED-0006	22.22	6.7	165.10	0.80
L-HPRED-0007	25.40	6.7	190.50	1.08
L-HPRED-0008	28.57	6.7	215.90	1.55
L-HPRED-0009	31.75	6.7	215.90	0.35
L-HPRED-0010	38.10	6.7	215.90	1.85
L-HPRED-0011	15.87	6.7	146.05	0.50

HITCH PIN WITH & WITHOUT LINCH PIN & CHAIN



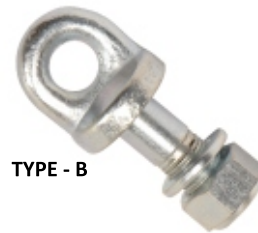
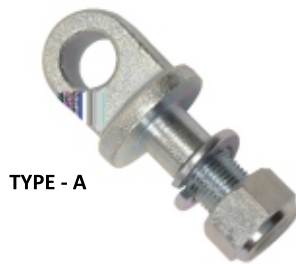
Part Number	Pin Dia. ØA (mm, inches)	Pin Dia. ØB (mm, inches)	Pin Dia. ØC (mm, inches)	Usable Length D (mm, inches)	Weight lbs.
L-HPWC-0022	12.70 / 0.50"	5.0 / 0.20	25.40 / 1	88.90 / 3.5	0.48
L-HPWC-0023	15.87 / 0.62"	6.7 / 0.26	32 / 1.26	107.95 / 4.25	0.66
L-HPWC-0024	15.87 / 0.62"	6.7 / 0.26	32 / 1.26	158.75 / 6.25	0.88
L-HPWC-0025	19.05 / 0.75"	6.7 / 0.26	38 / 1.50	107.95 / 4.25	0.97
L-HPWC-0026	19.05 / 0.75"	6.7 / 0.26	38 / 1.50	158.75 / 6.25	1.21
L-HPWC-0027	22.22 / 0.87"	6.7 / 0.26	44.5 / 1.75	107.95 / 4.25	1.32
L-HPWC-0028	22.22 / 0.87"	6.7 / 0.26	44.5 / 1.75	158.75 / 6.25	1.54
L-HPWC-0029	25.40 / 1"	6.7 / 0.26	51 / 2.01	107.95 / 4.25	1.76
L-HPWC-0031	25.40 / 1"	6.7 / 0.26	51 / 2.01	158.75 / 6.25	1.97
L-HPWC-0032	28.57 / 1.12"	6.7 / 0.26	57 / 2.24	158.75 / 6.25	2.53
L-HPWC-0033	31.75 / 1.25"	6.7 / 0.26	63 / 2.48	190.50 / 7.5	3.20

BENT HANDLE HITCH PINS (WITH & WITHOUT LINCH PIN, CHAIN)



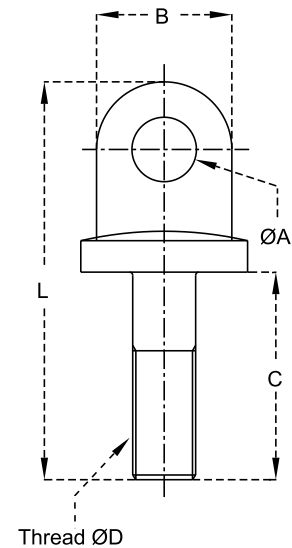
Part Number	Pin Dia. ØA (mm, inches)	Pin Dia. ØB (mm, inches)	Pin Dia. ØC (mm, inches)
L-BHHP-WC-0044	19	12	123
L-BHHP-WC-0045	19	12	130
L-BHHP-WC-0046	19	12	135
L-BHHP-WC-0047	19	12	175
L-BHHP-WC-0048	22	12	123
L-BHHP-WC-0049	22	12	130
L-BHHP-WC-0050	22	12	135
L-BHHP-WC-0051	22	12	175
L-BHHP-WC-0052	15	12	123
L-BHHP-WC-0053	15	12	130
L-BHHP-WC-0054	15	12	135
L-BHHP-WC-0055	15	12	175
L-BHHP-WC-0056	28	12	123
L-BHHP-WC-0057	28	12	130
L-BHHP-WC-0058	28	12	135
L-BHHP-WC-0059	28	12	175
L-BHHP-WC-0060	32	12	175

STABILISER EYE BOLTS

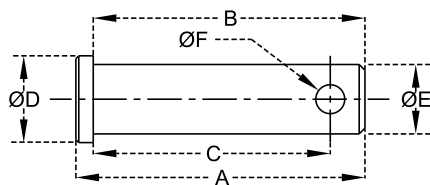


➤ Trivalent Zinc Plating.

Part Number	Dim. L (mm)	Dia. ØA (mm)	Dim. B (mm)	Dim. C (mm)	Thread ØD (mm)	Type	Ref. Number
L-SEB-0001	80	15	36	43	16X1.5	A	00023
L-SEB-0002	80	15	36	43	18X1.5	A	00034
L-SEB-0003	100	18	45	56	20X2.5	A	09345
L-SEB-0004	125	24	53	65	24X2	B	00024
L-SEB-0005	125	20	53	65	20X2.5	B	00035



SHACKLE PINS



➤ Trivalent Zinc Plating.

Part Number	Dim. A (mm)	Dim. B (mm)	Dim. C (mm)	Dia. ØD (mm)	Dia. ØE (mm)	Dia. ØF (mm)	Ref. Number
L-CP-0016	50	46	41	15	12	5	00772
L-CP-0017	50	46.5	41	17	14	5	00773
L-CP-0018	55	51.5	45	19	16	5	00774

CHAINS



L-STC-0001

Suitable For FIAT



L-STC-0002

Suitable For FORD



L-STC-0003

Suitable For Massey Ferguson

STABLISER CHAINS



Type - A



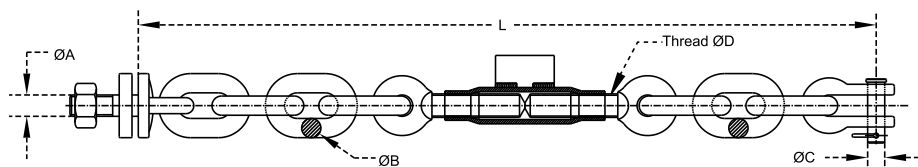
Type - B



Type - C



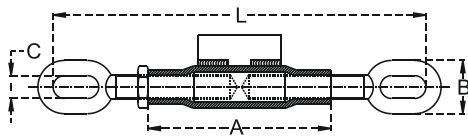
Type - D



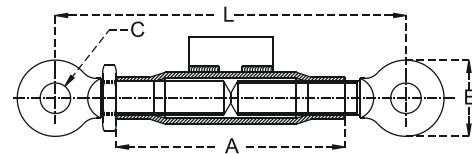
➤ Trivalent Zinc Plating.

Part Number	Type	No. of Links	Dim. L (mm)	Dia. ØA (mm)	Dia. ØB (mm)	Dia. ØC (mm)	Thread ØD (mm)	Ref. Number
L-STC-0004	A	2+2	420	18	12	12	16X2	35641
L-STC-0005	A	3+3	500	18	12	12	16X2	65642
L-STC-0006	A	4+4	580	18	12	12	16X2	65643
L-STC-0007	B	4+3	670	20	18	16	22X2.5	01115
L-STC-0008	B	2+2	515	20	12	14	16X2	01117
L-STC-0009	B	3+1	480	18	10	14	16X2	35646
L-STC-0010	B	2+2	570	20	12	14	20X2.5	65647
L-STC-0011	B	3+3	635	20	12	14	16X2	65648
L-STC-0012	B	3+3	670	20	12	14	20X2.5	35649
L-STC-0013	B	3+2	580	20	12	14	20X2.5	35650
L-STC-0014	B	1+1	460	20	12	14	20X2.5	35651
L-STC-0015	C	2+2	570	20	12	14	20X2.5	35652
L-STC-0016	C	3+2	600	20	12	14	20X2.5	35653
L-STC-0017	D	1+1	430	22	14	14-14	16X2	05752
L-STC-0018	D	2+1 (2+2)	520	22	13	14-14	16X2	05753
L-STC-0019	D	1+1	430	22	12	14-14	16X2	10681

STABILISERS ADJUSTERS



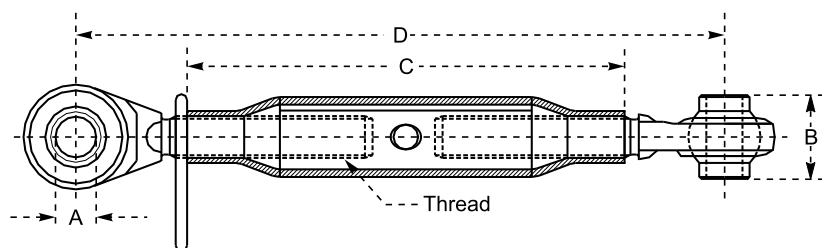
TYPE - A



TYPE - B

Part Number	Dim. L Min. (mm)	Dim. L Max. (mm)	Dim. A (mm)	Dim. B (mm)	Dia. ØC (mm)	Thread ØD (mm)	Type
L-STB-0030	245	335	120	35	14	16x2	A
L-STB-0031	250	350	135	38	14	18x2.5	A
L-STB-0032	275	370	130	38	14	20x2.5	A
L-STB-0033	280	390	150	38	14	22x2.5	A
L-STB-0034	210	300	120	46	18	16x2	B
L-STB-0035	230	330	130	46	18	20x2.5	B
L-STB-0036	250	360	150	50	20	22x2.5	B

TOP LINK ASSEMBLY



- Forged Eye Bolt, Material C-20/C-40.
- Balls (Material C-20, Hardness 52-58 HRC, Case Depth 0.4 - 0.8 mm)
- Trivalent Zinc Plating.

Part Number	Cat.	Ball ID ØA (mm)	Ball Length B (mm)	Thread (mm)	Pipe Length C (mm)	Dim. D Min. (mm)	Dim. D Max. (mm)	Ref. Number
L-TLA-0001	0	16	25.4	20 x 2.5	190	265	385	
L-TLA-0002	0	16	25.4	20 x 2.5	250	325	470	
L-TLA-0003	0	16	25.4	20 x 2.5	400	475	695	
L-TLA-0004	1	19	44	22 x 2.5	160	256	350	19671
L-TLA-0005	1	19	44	22 x 2.5	180	290	390	
L-TLA-0006	1	19	44	22 x 2.5	220	330	470	
L-TLA-0007	1	19	44	22 x 2.5	230	330	490	00186
L-TLA-0008	1	19	44	22 x 2.5	280	380	540	19672
L-TLA-0009	1	19	44	22 x 2.5	300	400	560	00218
L-TLA-0010	1	19	44	24 x 3	245	355	515	
L-TLA-0011	1	19	44	24 x 3	280	390	570	
L-TLA-0012	1	19	44	24 x 3	300	410	590	
L-TLA-0013	1	19	44	24 x 3	320	430	610	
L-TLA-0014	1	19	44	24 x 3	370	480	660	
L-TLA-0015	1	19	44	24 x 3	400	510	690	
L-TLA-0016	1	19	44	27 x 3	220	330	450	19674
L-TLA-0017	1	19	44	27 x 3	275	385	565	
L-TLA-0018	1	19	44	27 x 3	320	430	640	11047
L-TLA-0019	1	19	44	27 x 3	350	460	680	
L-TLA-0020	1	19	44	27 x 3	370	480	690	01038
L-TLA-0021	1	19	44	27 x 3	380	490	710	
L-TLA-0022	1	19	44	27 x 3	400	510	720	19675
L-TLA-0023	1	19	44	27 x 3	430	540	750	01116
L-TLA-0024	1	19	44	27 x 3	450	560	780	
L-TLA-0025	1	19	44	27 x 3	470	580	790	01118
L-TLA-0026	1	19	44	27 x 3	500	610	830	
L-TLA-0027	1	19	44	27 x 3	550	660	880	
L-TLA-0028	1	19	44	27 x 3	570	680	890	01119
L-TLA-0029	1, 2	19, 25.4	44, 51	27 x 3	320	430	640	19676
L-TLA-0030	1, 2	19, 25.4	44, 51	27 x 3	350	465	700	
L-TLA-0031	1, 2	19, 25.4	44, 51	27 x 3	360	480	680	00074
L-TLA-0032	1, 2	19, 25.4	44, 51	27 x 3	370	485	730	
L-TLA-0033	1, 2	19, 25.4	44, 51	27 x 3	380	495	745	

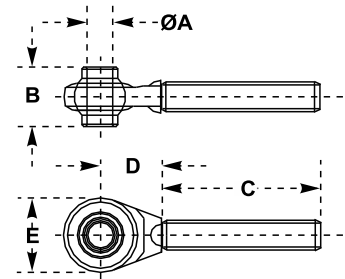


TOP LINK ASSEMBLY

- Forged Eye Bolt, Material C-20/C-40.
- Balls (Material C-20, Hardness 52-58 HRC, Case Depth 0.4 - 0.8 mm)
- Trivalent Zinc Plating.

Part Number	Cat.	Ball ID ØA (mm)	Ball Length B (mm)	Thread (mm)	Pipe Length C (mm)	Dim. D Min. (mm)	Dim. D Max. (mm)	Ref. Number
L-TLA-0034	1, 2	19, 25.4	44, 51	27 x 3	400	515	765	
L-TLA-0035	1, 2	19, 25.4	44, 51	27 x 3	430	454	795	
L-TLA-0036	1, 2	19, 25.4	44, 51	27 x 3	450	565	815	
L-TLA-0037	1, 2	19, 25.4	44, 51	27 x 3	470	585	810	00086
L-TLA-0038	1, 2	19, 25.4	44, 51	27 x 3	500	615	865	
L-TLA-0039	1, 2	19, 25.4	44, 51	27 x 3	550	665	915	
L-TLA-0040	2	25.4	51	27 x 3	220	340	460	19677
L-TLA-0041	2	25.4	51	27 x 3	275	395	575	
L-TLA-0042	2	25.4	51	27 x 3	320	460	680	01166
L-TLA-0043	2	25.4	51	27 x 3	350	470	725	
L-TLA-0044	2	25.4	51	27 x 3	370	490	765	
L-TLA-0045	2	25.4	51	27 x 3	380	500	780	
L-TLA-0046	2	25.4	51	27 x 3	400	520	800	
L-TLA-0047	2	25.4	51	27 x 3	430	550	780	11066
L-TLA-0048	2	25.4	51	27 x 3	450	570	850	
L-TLA-0049	2	25.4	51	27 x 3	470	590	870	
L-TLA-0050	2	25.4	51	27 x 3	500	620	850	01916
L-TLA-0051	2	25.4	51	27 x 3	550	670	950	
L-TLA-0052	2	25.4	51	27 x 3	570	690	970	
L-TLA-0053	2	25.4	51	30 x 3	350	470	720	19678
L-TLA-0054	2	25.4	51	30 x 3	400	520	770	19679
L-TLA-0055	2	25.4	51	30 x 3	420	540	790	01191
L-TLA-0056	2	25.4	51	30 x 3	460	580	830	01257
L-TLA-0057	2	25.4	51	30 x 3	500	620	870	19680
L-TLA-0058	2	25.4	51	30 x 3	520	640	890	01264
L-TLA-0059	2	25.4	51	30 x 3	560	680	930	01265
L-TLA-0060	2	25.4	51	30 x 3	610	730	980	01413
L-TLA-0061	2	25.4	51	30 x 3	730	850	1100	19681
L-TLA-0062	2	25.4	51	36 x 3	360	485	720	03P0195
L-TLA-0063	2	25.4	51	36 x 3	400	525	760	03P0200
L-TLA-0064	2	25.4	51	36 x 3	450	575	810	03P0203
L-TLA-0065	2	25.4	51	36 x 3	520	640	860	03P0205
L-TLA-0066	2	25.4	51	36 x 3	580	705	920	03P0210
L-TLA-0067	2	25.4	51	36 x 3	400	555	840	03P0215
L-TLA-0068	2, 3	25.4, 32	51	36 x 3	400	555	840	03P0220
L-TLA-0069	3	32	51	36 x 3	460	615	900	03P0225
L-TLA-0070	2	25.4	51	40 x 3	500	635	870	03P0226
L-TLA-0071	2	25.4	51	40 x 3	620	755	990	03P0227
L-TLA-0072	3	32	51	40 x 3	500	650	970	03P0228
L-TLA-0073	3	32	51	40 x 3	620	770	1090	03P0229

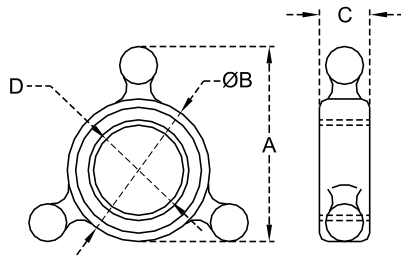
TOP LINK ENDS



- Forged Eye Bolt, Material C-20/C-40.
- Balls (Material C-20, Hardness 52-58 HRC, Case Depth 0.4 - 0.8 mm)
- Trivalent Zinc Plating.

Part Number	Cat.	Ball ID ØA (mm)	Ball Length B (mm)	Thread (mm)	Dim. C (mm)	Dim. D (mm)	Dim. E (mm)	Ball OD (mm.)	Ref. Number
L-TLEB-0084	1	19	44	22 X 2.5 R	125	45	52	38	03411
L-TLEB-0085	1	19	44	22 X 2.5 L	125	45	52	38	03412
L-TLEB-0086	1	19	44	24 X 2.5 R	115	50	62	38	03415
L-TLEB-0087	1	19	44	24 X 2.5 L	115	50	62	38	03416
L-TLEB-0088	-	22.1	35	24 X 3 R	127	45	62	44	18753
L-TLEB-0089	1	19.2	44	24 X 3 R	155	50	62	38	18756
L-TLEB-0090	1	19.2	44	24 X 3 L	155	50	62	38	18757
L-TLEB-0091	1, 2	19.2, 25.4	45	24 X 3 R	165	58	80	54	18754
L-TLEB-0092	1, 2	19.2, 25.4	45	24 X 3 L	165	58	80	54	18755
L-TLEB-0093	-	28.2	45	27 X 3 R	180	62	80	58	18758
L-TLEB-0094	1	19	44	27 X 3 R	155	50	62	38	03419
L-TLEB-0095	1	19	44	27 X 3 L	155	50	62	38	03420
L-TLEB-0096	2	25.4	51	27 X 3 R	90	55	75	50	35699
L-TLEB-0097	2	25.4	51	27 X 3 L	90	55	75	50	35700
L-TLEB-0098	2	25.4	51	27 X 3 R	170	55	75	50	03423
L-TLEB-0099	2	25.4	51	27 X 3 L	170	55	75	50	03424
L-TLEB-0100	2	25.4	51	27 X 3 R	220	45	70	50	18765
L-TLEB-0101	2	25.4	51	27 X 3 L	220	45	70	50	18766
L-TLEB-0102	1	19.2	44	30 X 3 R	175	50	62	38	18759
L-TLEB-0103	1	19.2	44	30 X 3 L	175	50	62	38	18760
L-TLEB-0104	2	25.4	51	30 X 3 R	165	55	75	50	03427
L-TLEB-0105	2	25.4	51	30 X 3 L	165	55	75	50	03428
L-TLEB-0106	2	25.4	51	30 X 3 R	200	50	75	50	18767
L-TLEB-0107	2	25.4	51	30 X 3 L	200	50	75	50	18768
L-TLEB-0108	-	20.2	44	30 X 3.5 R	175	50	62	42	18763
L-TLEB-0109	-	20.2	44	30 X 3.5 L	175	50	62	42	18764
L-TLEB-0110	-	22.1	51	30 X 3.5 R	165	55	75	50	18771
L-TLEB-0111	-	22.1	51	30 X 3.5 L	165	55	75	50	18772
L-TLEB-0112	1	19.2	44	30 X 3.5 R	175	50	62	38	18761
L-TLEB-0113	1	19.2	44	30 X 3.5 L	175	50	62	38	18762
L-TLEB-0114	2	25.4	51	30 X 3.5 R	165	55	75	50	18769
L-TLEB-0115	2	25.4	51	30 X 3.5 L	165	55	75	50	18770
L-TLEB-0116	2	25.4	51	36 X 3 R	165	55	80	54	03437
L-TLEB-0117	2	25.4	51	36 X 3 L	165	55	80	54	03438
L-TLEB-0118	2	25.4	51	36 X 3 R	200	70	96	62	03489
L-TLEB-0119	2	25.4	51	36 X 3 L	200	70	96	62	03488
L-TLEB-0120	2	25.4	51	40 X 3 R	175	60	80	50	03439
L-TLEB-0121	2	25.4	51	40 X 3 L	175	60	80	50	03440
L-TLEB-0122	3	32	51	36 X 3 R	200	70	96	62	02698
L-TLEB-0123	3	32	51	36 X 3 L	200	70	96	62	02699
L-TLEB-0124	3	32	51	40 X 3 R	200	70	96	62	09324
L-TLEB-0125	3	32	51	40 X 3 L	200	70	96	62	09325

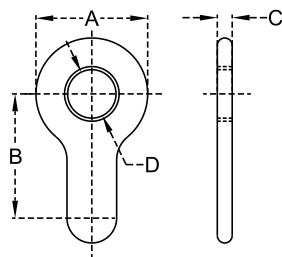
TOP LINK LOCKING - FORGED



➤ Trivalent Zinc Plating.

Part Number	Dim. A (mm)	Dia. ØB (mm)	Dim. C (mm)	Thread Size ØD (mm)	Ref. Number
L-TLLCF-0001	25	34	12	22X2.5	11879
L-TLLCF-0002	25	34	12	24X2.5	04155
L-TLLCF-0003	25	34	12	24X3	18780
L-TLLCF-0004	40	40	18	27X3	04156
L-TLLCF-0005	40	40	18	30X3	04157
L-TLLCF-0006	40	40	18	30X3.5	18781
L-TLLCF-0007	48	48	23	36X3	18782
L-TLLCF-0008	50	54	28	40X3	18783

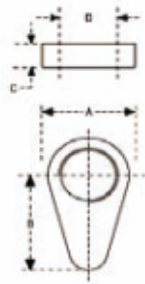
TOP LINK LOCKING - COLLAR



➤ Trivalent Zinc Plating.

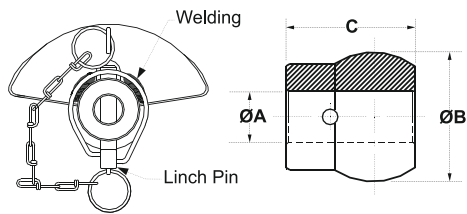
Part Number	Dim. A (mm)	Dim. B (mm)	Dim. C (mm)	Thread Size ØD (mm)	Ref. Number
L-TLLCS-0019	45	60	6	22X2.5	04177
L-TLLCS-0020	45	60	6	24X2.5	04153
L-TLLCS-0021	45	60	6	24X3	18777
L-TLLCS-0022	45	60	6	27X3	04154
L-TLLCS-0023	45	60	6	30X3	04160
L-TLLCS-0024	45	60	6	30X3.5	18778
L-TLLCS-0025	60	88	10	36X3	04178
L-TLLCS-0026	60	88	10	40X3	04184

TOP LINK LOCKING COLLARS (PLATE)



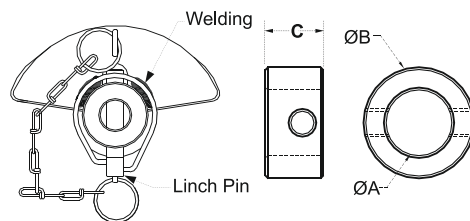
Part Number	Dim. A (mm)	Dim. ØB (mm)	Dim. C (mm)	Thread D (mm)
L-TLLC-0037	45	60	6	22 x 2.5
L-TLLC-0038	45	60	6	24 x 25
L-TLLC-0039	45	60	6	24 x 3
L-TLLC-0040	45	60	6	27 x 3
L-TLLC-0041	45	60	6	30 x 3
L-TLLC-0042	45	60	6	30 x 3.5
L-TLLC-0043	60	88	10	36 x 3
L-TLLC-0044	60	88	10	40 x 3

GUIDED CONE BALLS



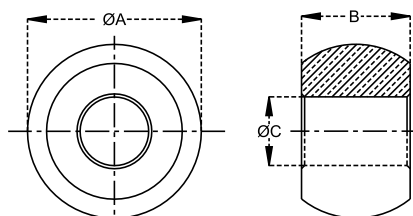
Part Number	Dia. ØA (mm)	Dia. ØB (mm)	Dim. C (mm)
L-GCB-0001	28.4	56	69
L-GCB-0002	37.6	56	68
L-GCB-0003	28.4	64	72
L-GCB-0004	37	64	72

GUIDED CONE BUSH



Part Number	Dia. ØA (mm)	Dia. ØB (mm)	Dim. C (mm)
L-GCB-0005	28.4	47	25
L-GCB-0006	37.7	47	25

BALLS - LOWER LINK

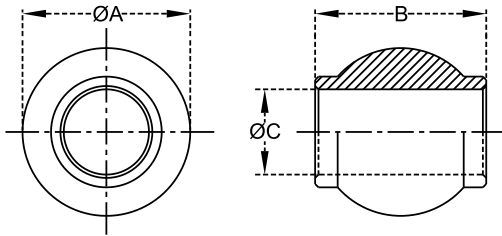


- Balls (Material C-20, Hardness 52-58 HRC, Case Depth 0.4 - 0.8 mm)
- Optional Material 16MnCr5 / 20MnCr5.
- Trivalent Zinc Plating.

Part Number	Dia. ØA (mm)	Dim. B (mm)	Dia. ØC (mm)	Ref. Number
L-LLB-0017	28	20	16	
L-LLB-0018	32	25.4	16	
L-LLB-0019	38	25.4	16	
L-LLB-0020	38	30	19	
L-LLB-0021	38	27	20	
L-LLB-0022	44	35	22.1	1R0443522
L-LLB-0023	44	30	22	
L-LLB-0024	44	34	25.4	
L-LLB-0025	44	35	19	
L-LLB-0026	44.5	35	22.1	
L-LLB-0027	46	33.5	28.4	
L-LLB-0028	46	35	25.4	
L-LLB-0029	46	33.5	28.4	
L-LLB-0031	46	35	28.4	
L-LLB-0032	48	35	22.1	
L-LLB-0033	48	35	25.4	
L-LLB-0034	48	35	28.4	
L-LLB-0035	50	40	25.4	
L-LLB-0036	50	40	29	
L-LLB-0037	50	34	22.1	
L-LLB-0038	50	34	20	
L-LLB-0039	50	34	24	
L-LLB-0040	50	34	28	
L-LLB-0041	50	34	30	
L-LLB-0042	50	34	25.4	
L-LLB-0043	50	44	25.4	
L-LLB-0044	50	39.5	28.4	
L-LLB-0045	50	38	25.4	
L-LLB-0046	50	38	28.4	
L-LLB-0047	50.8	25	38	
L-LLB-0048	54	55	35	
L-LLB-0049	54	35	35	
L-LLB-0050	54	42	30	
L-LLB-0051	55	44	28.4	
L-LLB-0052	56	35	22.1	00192
L-LLB-0053	56	45	22.1	01500
L-LLB-0054	56	35	25.4	05011
L-LLB-0055	56	35	28.4	00193
L-LLB-0056	56	38	28.4	
L-LLB-0057	56	45	28	15001
L-LLB-0058	56	45	28.4	01501
L-LLB-0059	56	44.5	29	

Part Number	Dia. ØA (mm)	Dim. B (mm)	Dia. ØC (mm)	Ref. Number
L-LLB-0060	56	35	29	
L-LLB-0061	57	35	22.1	
L-LLB-0062	57	35	25.4	
L-LLB-0063	57	38	25.4	
L-LLB-0064	57	35	28.4	
L-LLB-0065	57	38	28.4	
L-LLB-0066	57	42	28.4	
L-LLB-0067	57	44.5	28.4	
L-LLB-0068	57	45	34	
L-LLB-0069	57	45	32	
L-LLB-0070	57	45	30	
L-LLB-0071	58	38	25	
L-LLB-0072	60	51	25.4	
L-LLB-0073	60	45	34	
L-LLB-0074	60	48.5	32	
L-LLB-0075	60	44.5	30.2	
L-LLB-0076	62	45	32	
L-LLB-0077	62	51	32	
L-LLB-0078	62	44.5	28.4	
L-LLB-0079	62.5	45	37	
L-LLB-0080	63.5	45	28.6	
L-LLB-0081	63.5	45	37	
L-LLB-0082	63.5	45	28.6	
L-LLB-0083	64	45	22	
L-LLB-0084	64	45	28.4	01502
L-LLB-0085	64	45	37	18872
L-LLB-0086	64	45	36	
L-LLB-0087	64	45	38.2	01503
L-LLB-0088	64	55	28.6	
L-LLB-0089	64	54	32	
L-LLB-0090	64	35	28.4	
L-LLB-0091	64	55	25.4	
L-LLB-0092	64	45	34.4	
L-LLB-0093	64	45	30.4	
L-LLB-0094	64	45	32.4	
L-LLB-0095	64	45	35.4	
L-LLB-0096	64	45	40.4	
L-LLB-0097	64	45	42.4	
L-LLB-0098	64	54	28.4	
L-LLB-0099	64	45	34	
L-LLB-0100	64	40	38	
L-LLB-0101	64	46	38	

TOP LINK BALLS



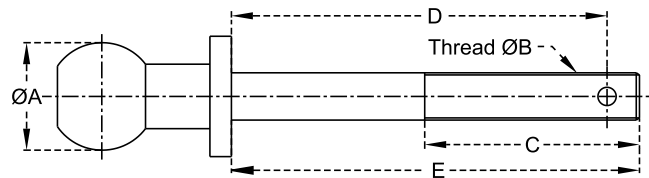
- Balls (Material C-20, Hardness 52-58 HRC, Case Depth 0.4 - 0.8 mm)
- Optional Material 16MnCr5 / 20MnCr5.
- Trivalent Zinc Plating.



Part Number	Dia. ØA (mm)	Dim. B (mm)	Dia. ØC (mm)	Ref. Number
L-TLB-0112	32	25.4	16	
L-TLB-0113	38	25.4	15.9	
L-TLB-0114	38	41	19	
L-TLB-0115	38	44	19	
L-TLB-0116	38	44	20	
L-TLB-0117	50	44	19	
L-TLB-0118	46	44	20	
L-TLB-0119	46	42	25.4	
L-TLB-0120	46	44	25.4	
L-TLB-0121	46	51	25.4	
L-TLB-0122	50	51	22.1	
L-TLB-0123	50	44	25.4	
L-TLB-0124	50	51	25.4	01504
L-TLB-0125	50.8	44.5	25.4	
L-TLB-0126	50.8	44.5	28.4	
L-TLB-0127	54	51	25.4	
L-TLB-0128	54	55	30	
L-TLB-0129	54	51	32	
L-TLB-0130	54	55	35	
L-TLB-0131	60	51	25.4	05118
L-TLB-0132	60	51	32	05130
L-TLB-0133	38	35	22.1	
L-TLB-0134	44	51	20	
L-TLB-0135	42	44	19	
L-TLB-0136	46	51	22.1	
L-TLB-0137	46	45	28.4	
L-TLB-0138	46	35	22.1	
L-TLB-0139	46	44.5	22.1	
L-TLB-0140	46	50	26	
L-TLB-0141	46	51	25.4	
L-TLB-0142	46	51	20	
L-TLB-0143	48	50	25.4	
L-TLB-0144	50	44.5	22.1	
L-TLB-0145	50	51	19	
L-TLB-0146	50	45	28.6	
L-TLB-0147	50	49	25.4	
L-TLB-0148	50	51	30	

Part Number	Dia. ØA (mm)	Dim. B (mm)	Dia. ØC (mm)	Ref. Number
L-TLB-0149	50	51	22.1	
L-TLB-0150	50	51	25.2	
L-TLB-0151	52	45	28.6	
L-TLB-0152	54	44	32	
L-TLB-0153	54	44	20	
L-TLB-0154	54	44	22.1	
L-TLB-0155	54	45	28.4	
L-TLB-0156	54	51	34	
L-TLB-0157	54	55	32	
L-TLB-0158	54	60	19	
L-TLB-0159	54	50	30	
L-TLB-0160	54	50	35	
L-TLB-0161	54	51	30	
L-TLB-0162	56	51	25.4	
L-TLB-0163	60	51	28.4	
L-TLB-0164	60	51	37	
L-TLB-0165	62	51	25.4	
L-TLB-0166	62	51	32	
L-TLB-0167	64	55	28.6	
L-TLB-0168	78	75	50	
L-TLB-0169	78	75	45	
L-TLB-0170	78	75	40	
L-TLB-0171	78	65	40	

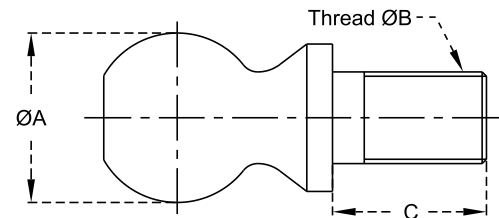
HITCH - PIN BALLS



- Material C-40.
- Trivalent Zinc Plating.
- With Chain, Linch Pin, Nut & Washer

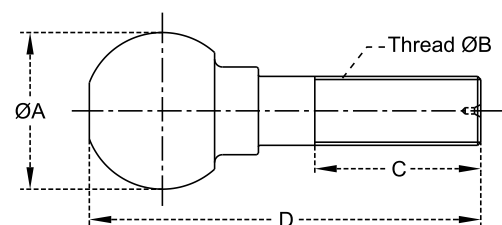
Part Number	Dia. ØA (mm)	Thread Dia. ØB (inches)	Dim. C (mm)	Dim. D (mm)	Dim. E (mm)	Ref. Number
L-HBL-0182	50	7/8"	100	162	190	S-3210
L-HBL-0183	50	1"	100	162	190	S-3211

HITCH BALLS / TOW BALLS



- Material C-40.
- Trivalent Zinc Plating.
- With Nut & Washer

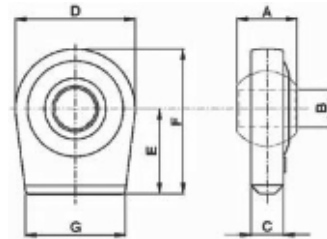
Part Number	Dia. ØA (mm)	Thread Dia. ØB (inches)	Dim. C (mm)	Max. Load (Kg.)	Ref. Number
L-HB-0193	47.8	3/4" 16UNF	54	900	5101
L-HB-0194	50.8	3/4" 16UNF	54	1600	5201
L-HB-0195	50.8	1" 12UNF	54	2300	5301
L-HB-0196	58.68	1-1/4" 12UNF	54	3400	5501



- Material C-40.
- Trivalent Zinc Plating.
- With Nut & Washer

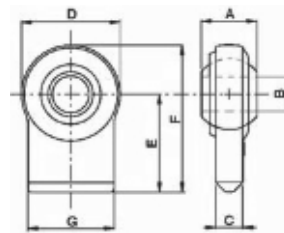
Part Number	Dia. ØA (mm)	Thread Dia. ØB (mm)	Dim. C (mm)	Dim. D (mm)	Max. Load (Kg.)	Ref. Number
L-HB-0207	50	M 22X1.5	53	125	3500	11776

WELD ON BALL ENDS



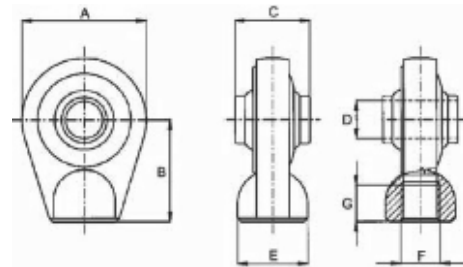
Part Number	Cat.	A mm	B mm	C mm	D mm	E mm	F mm	G mm
L-WOE-0001	1	35	19.30	14	65	40	73	50
L-WOE-0002	1	35	22.10	14	65	45	73	50
L-WOE-0003	2	35	25.40	18	83	55	97	70
L-WOE-0004	2	45	28.40	22	96	65	113	70
L-WOE-0005	2	45	34.20	24	96	65	113	70
L-WOE-0006	3	45	38.40	24	108	65	119	80

WELD ON BALL ENDS



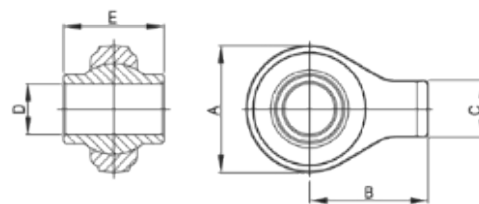
Part Number	Cat.	A mm	B mm	C mm	D mm	E mm	F mm	G mm
L-WOE-0007	1	35	19.1	18	67	50	84	56
L-WOE-0008	1	35	22.1	18	67	50	84	56
L-WOE-0009	1	35	22.1	18	67	75	109	58
L-WOE-0010	2	35	28.1	18	85	85	120	70
L-WOE-0011	2	45	28.1	18	85	85	120	70

TOP LINK BALL ENDS



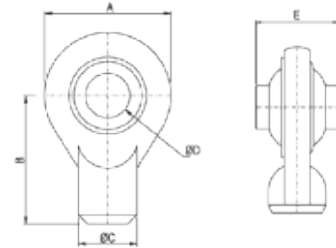
Part Number	A mm	B mm	C mm	D mm	E mm
L-TWOE-0012	60	60	44	19.50	34
L-TWOE-0013	75	63	51	22.50	38
L-TWOE-0014	85	70	51	25.40	48
L-TWOE-0015	53	48	30	19	25
L-TWOE-0016	90	85	51	32	38
L-TWOE-0017	83	65	55	29	50

WELD ON END



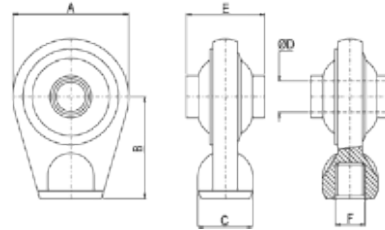
Part Number	A	B	C	D	E
L-WOE-0018	57	50.8	28.5	19	44
L-WOE-0019	62	34	30	19	44
L-WOE-0020	62	34	30	20	44
L-WOE-0021	62	34	30	22.1	44
L-WOE-0022	62	60	30	25.4	51

WELD ON END



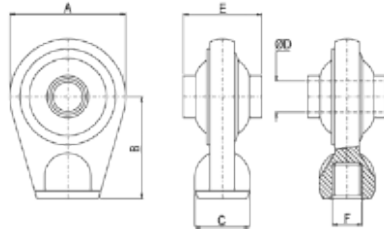
Part Number	A	B	C	D	E
L-WOE-0023	54	55	25.4	19	44
L-WOE-0024	55	50	25	19	30
L-WOE-0025	55	50	25	19	44
L-WOE-0026	55	50	25	20	44
L-WOE-0027	76	73	30	25.4	51
L-WOE-0028	90	85	40	25.4	51
L-WOE-0029	90	85	40	30	51
L-WOE-0030	90	85	40	32	51
L-WOE-0031	90	85	40	32	51
L-WOE-0032	75	70	31	25.4	51

WELD ON END



Part Number	A	B	C	D	E
L-WOE-0033	62	50	26	19	35
L-WOE-0034	62	50	26	22.1	35
L-WOE-0035	62	58	34	19	44
L-WOE-0036	62	58	34	20	44
L-WOE-0037	62	60	34	19	44
L-WOE-0038	62	60	34	20	44
L-WOE-0039	62	60	34	22.1	44
L-WOE-0040	72	70	45	19	51
L-WOE-0041	72	70	45	22.1	51
L-WOE-0042	72	70	45	25.4	51
L-WOE-0043	iz	70	45	30	51
L-WOE-0044	75	70	38	19	51
L-WOE-0045	75	65	38	22.1	51
L-WOE-0046	75	65	38	25.4	40
L-WOE-0047	75	65	38	25.4	51
L-WOE-0048	75	65	38	30	51
L-WOE-0049	83	65	50	25.4	51
L-WOE-0050	83	65	50	30	42
L-WOE-0051	83	65	50	30	55

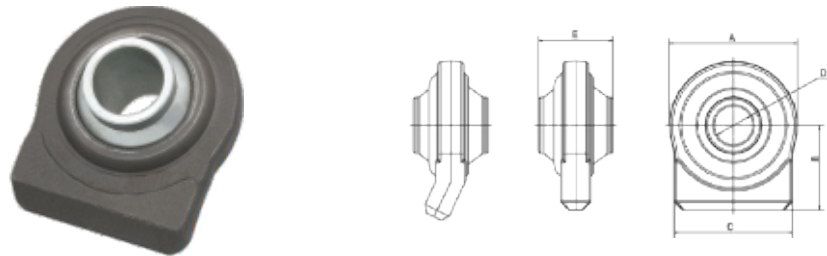
WELD ON END



GREASE NIPPLE CAN BE
PROVIDED (OPTIONAL)

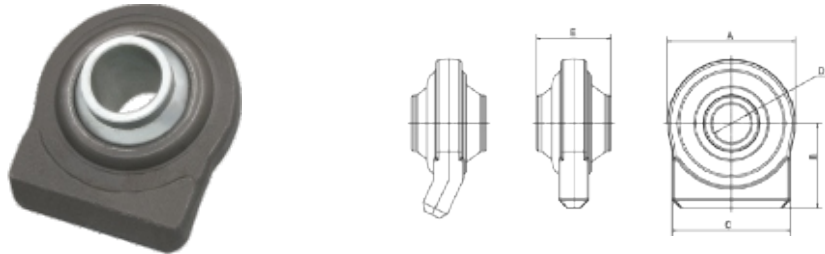
Part Number	A	B	C	D	E	F
L-WOE-0052	83	65	50	32	51	
L-WOE-0053	83	65	50	35	35	
L-WOE-0054	83	65	50	35	55	
L-WOE-0055	85	70	50	19	51	
L-WOE-0056	85	70	50	22.1	51	
L-WOE-0057	85	70	50	22.1	51	M27x2
L-WOE-0058	85	70	50	25.4	51	
L-WOE-0059	85	70	50	25.4	51	M27x2
L-WOE-0060	85	70	50	30	51	
L-WOE-0061	85	70	50	30	51	M27x2
L-WOE-0062	92	65	50	30	42	
L-WOE-0063	92	65	50	30	59	
L-WOE-0064	92	65	50	32	51	
L-WOE-0065	92	65	50	35	35	
L-WOE-0066	108	60	58	40	75	
L-WOE-0067	108	60	58	45	75	
L-WOE-0068	108	60	58	50	75	
L-WOE-0069	108	85	60	40	75	
L-WOE-0070	108	85	60	40	75	M27x2
L-WOE-0071	108	85	60	45	75	
L-WOE-0072	108	85	60	45	75	M27x2
L-WOE-0073	108	85	60	50	75	
L-WOE-0074	108	85	60	50	75	M27x2

WELD ON END



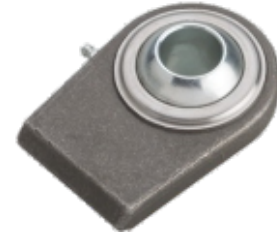
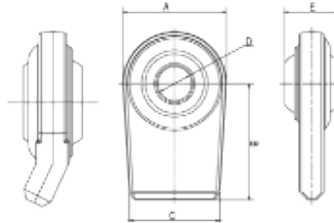
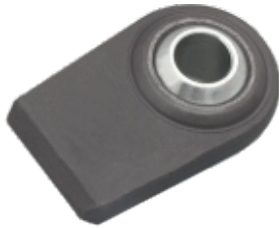
Part Number	A	B	C	D	E
L-WOE-0075	46	26	30	16	20
L-WOE-0076	46	60	30	16	20
L-WOE-0078	65	43	50	18	35
L-WOE-0079	65	43	50	19	35
L-WOE-0080	65	43	50	22.1	35
L-WOE-0081	66	70	55	22.1	35
L-WOE-0082	68	90	50	22.1	35
L-WOE-0083	68	90	60	22.1	35
L-WOE-0084	76	50	70	22.1	35
L-WOE-0085	76	50	70	25.4	35
L-WOE-0086	76	50	70	25.4	35
L-WOE-0087	76	50	70	28.4	35
L-WOE-0088	76	50	70	28.4	35
L-WOE-0089	78	80	70	25.4	38
L-WOE-0090	78	80	70	28.4	38
L-WOE-0091	80	65	70	22/28	45
L-WOE-0092	80	65	70	22/28	45
L-WOE-0093	80	65	70	25.4	45
L-WOE-0094	80	65	70	28.4	45
L-WOE-0095	80	65	70	28.4	45

WELD ON END



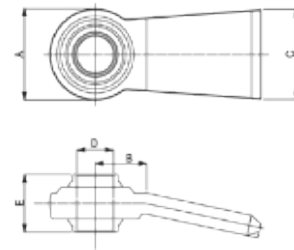
Part Number	A	B	C	D	E
L-WOE-0096	80	80	70	25.4	38
L-WOE-0097	80	80	70	28.4	38
L-WOE-0098	80	80	70	28.4	45
L-WOE-0099	83	55	70	22.1	35
L-WOE-0100	83	55	70	25.4	35
L-WOE-0101	83	55	70	28.4	35
L-WOE-0102	83	55	70	28.4	45
L-WOE-0103	80	75	79	28.4	45
L-WOE-0104	90	82	76	28.4	45
L-WOE-0105	96	65	70	28.4	45
L-WOE-0106	96	65	70	30	45
L-WOE-0107	96	65	70	32	45
L-WOE-0108	96	65	70	34	45
L-WOE-0109	108	65	80	28.4	45
L-WOE-0110	108	65	80	37	45
L-WOE-0111	108	65	80	38	45

WELD ON END



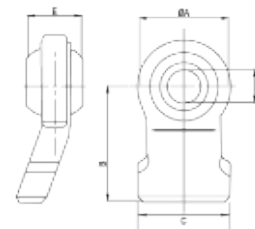
Part Number	A	B	C	D	E
L-WOE-0112	52	50	52	19	44
L-WOE-0113	67	50	60	19	35
L-WOE-0114	67	50	60	22.1	35
L-WOE-0115	67	50	56	22.1	35
L-WOE-0116	67	70	60	22.1	35
L-WOE-0117	67	75	58	22.1	35
L-WOE-0118	82	55	70	28.4	45
L-WOE-0119	83	79	70	25.4	38
L-WOE-0120	83	79	70	25.4	38
L-WOE-0121	85	80	70	28.4	45
L-WOE-0122	85	80	70	22/28	45
L-WOE-0123	85	80	70	28.4	45
L-WOE-0124	94	86	94	28.4	45
L-WOE-0125	94	86	94	38	45
L-WOE-0126	100	83	100	28.4	45
L-WOE-0127	100	83	100	37	45
L-WOE-0128	100	83	100	38	45

WELD ON END



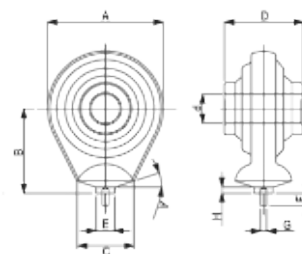
Part Number	A	B	C	D	E
L-WOE-0129	71	40	70	28.4	45

WELD ON END



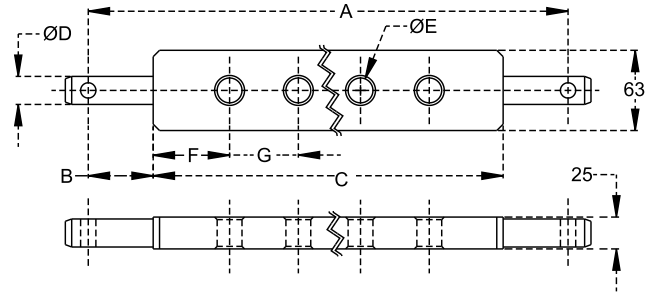
Part Number	A	B	C	D	E
L-WOE-0130	100	130	100	28.4	45
L-WOE-0131	100	130	100	37	45
L-WOE-0132	100	130	100	38	45

WELD ON END



Part Number	A	B	C	d	D	E	F	G	H
L-WOE-0133	75	55	35	19	51	12	75	4	4
L-WOE-0134	75	55	35	22.1	51	12	75	4	4
L-WOE-0135	75	55	35	25.4	51	12	75	4	4
L-WOE-0136	75	55	35	30	51	12	75	4	4

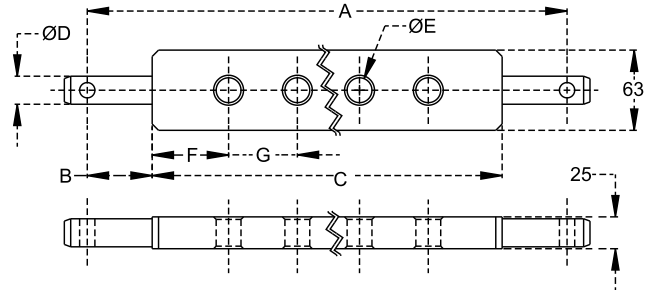
DRAW BAR



➤ Material C-40, Powder Coated (Optional Colour).

Part Number	No. of Holes	Dim. T (mm)	Dim. W (mm)	Dim. A (mm)	Dim. B (mm)	Dim. C (mm)	Dia. ØD (mm)	Dia. ØE (mm)	Dim. F (mm)	Dim. G (mm)	Ref. Number
L-DB-0001	4	25	63	420	57	306	22	22	66	58	
L-DB-0002	5	25	63	540	50	440	22	22	80	70	
L-DB-0003	3	25	63	580	50	480	22	22	120	120	
L-DB-0004	7	25	63	610	51	508	22	22	83	57	
L-DB-0005	9	25	63	660	57	546	22.2	19.5	76	63.5	
L-DB-0006	11	25	63	774	57	660	22	19	75	51	
L-DB-0007	9	25	63	775	57	661	22	22	114	54	
L-DB-0008	7	25	63	780	54	672	22	22	97.5	80	00030
L-DB-0009	3	30	63	440	55	330	22	20	110	55	
L-DB-0010	5	30	63	505	52.5	400	22	19.5	68	66	
L-DB-0011	5	30	63	510	53	404	22	20	94	54	
L-DB-0012	5	30	63	540	55	430	28	20	75	70	
L-DB-0013	7	30	63	550	53	444	22	20	113	54	
L-DB-0014	7	30	63	613	51	511	22	19	85	57	
L-DB-0015	9	30	63	620	50	520	28	28	72	47	
L-DB-0016	9	30	63	622	50	522	22	36	71	47.5	
L-DB-0017	7	30	63	648	49	550	22	20	113	54	
L-DB-0018	8	30	63	685	58	569	22	22	80	75	
L-DB-0019	7	30	63	680	51	578	22	20	115	58	
L-DB-0020	7	30	63	683	49	585	22	20	82.5	70	
L-DB-0021	9	30	63	720	58	604	22	22	70	58	
L-DB-0022	9	30	63	750	55	640	22	19.5	64	64	
L-DB-0023	11	30	63	766	60	646	28	20	60	52.6	
L-DB-0024	11	30	63	765	53	659	22	20	60	54	
L-DB-0025	9	30	63	800	70	660	28	22	70	65	09089
L-DB-0026	11	30	63	800	60	680	28.4	22	70	54	
L-DB-0027	9	30	63	796	57.5	681	22	22.2	101	60	
L-DB-0028	9	30	63	800	58	684	22	22	82	65	
L-DB-0029	11	30	63	800	52	696	22	22	78	54	
L-DB-0030	9	30	63	872	61	750	28	20	159	54	
L-DB-0031	9	30	63	900	70	760	28	22	100	70	09090
L-DB-0032	11	30	63	920	60	800	28	22	100	60	
L-DB-0033	9	30	63	937	60	817	28	26	88.5	80	
L-DB-0034	11	30	63	930	55	820	28	22	85	65	09091
L-DB-0035	7	30	63	962	60	842	28	25	181	80	
L-DB-0036	11	30	63	960	55	850	28	22	100	65	

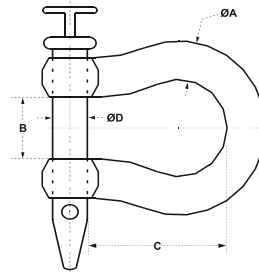
DRAW BAR



➤ Material C-40, Powder Coated (Optional Colour).

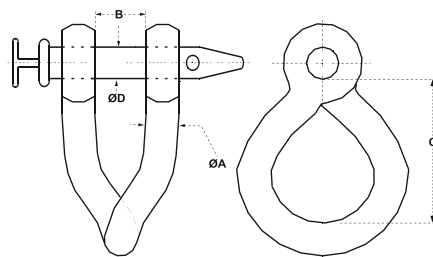
Part Number	No. of Holes	Dim. T (mm)	Dim. W (mm)	Dim. A (mm)	Dim. B (mm)	Dim. C (mm)	Dia. ØD (mm)	Dia. ØE (mm)	Dim. F (mm)	Dim. G (mm)	Ref. Number
L-DB-0037	7	32	76	750	55	640	28	25.5	80	80	
L-DB-0038	9	32	76	800	70	660	28	28.4	70	65	
L-DB-0039	6	32	76	800	58	684	28.4	20	104.5	95	
L-DB-0040	11	32	76	825	55	715	28	22	87.5	65	
L-DB-0041	5	32	76	861	60.5	740	28.4	27	140	115	
L-DB-0042	7	32	76	890	64	762	28	29	126	85	
L-DB-0043	7	32	76	876	50	776	28	28	100	96	
L-DB-0044	7	32	76	890	55	780	28	28	124	88.6	
L-DB-0045	9	32	76	910	55	800	28	25.5	80	80	
L-DB-0046	7	32	76	932	62	807	28	26	49.5	86.2	
L-DB-0047	11	32	76	932	60	812	28	28	86	64	
L-DB-0048	11	32	76	933	60	813	28	28.5	81.5	65	
L-DB-0049	7	32	76	930	55	820	28	28	110	100	
L-DB-0050	11	32	76	933	55	823	28	22	86.5	65	
L-DB-0051	7	32	76	925	50	825	28.4	25	172.5	80	
L-DB-0052	7	32	76	940	55	830	28	26	85	110	
L-DB-0053	11	32	76	960	62	836	28	28	78	68	
L-DB-0054	11	32	76	960	55	850	28	26	100	65	
L-DB-0055	9	32	76	962	51	860	28.5	33	110	80	
L-DB-0056	7	32	76	981	60	861	28.4	28.5	154.5	92	
L-DB-0057	9	32	76	980	55	870	28	25.5	87	87	
L-DB-0058	7	33	75	888	55	780	28	28.5	90	100	00031
L-DB-0059	3	40	80	770	56	658	28.5	26.5	164.5	164.5	
L-DB-0060	7	40	80	862	60	742	28.5	26	122	83	
L-DB-0061	6	40	80	890	63	764	28	28	132	100	
L-DB-0062	7	40	80	930	55	820	28	28.5	102.5	102.5	00045
L-DB-0063	3	40	80	960	55	850	28	28.5	212.5	141.5	
L-DB-0064	5	40	80	1000	60	880	28	28	160	140	
L-DB-0065	5	40	80	1084	60	964	28.5	26	202	140	
L-DB-0066	7	40	80	1085	60	965	36	33	152.5	110	
L-DB-0067	7	45	90	1094	65	964	36	16	152	110	

STRAIGHT CLEVISES



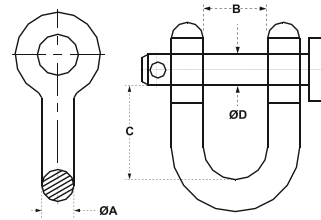
Part Number	Body Dia. ØA (inches)	Clevis Opening B (inches)	Usable Length C (inches)	Pin Dia. ØD (inches)
L-SC-0001	5/8"	7/8"	3-1/4"	1/2"
L-SC-0002	3/4"	1-5/16"	3-3/4"	5/8"
L-SC-0003	7/8"	1-5/16"	3-1/4"	3/4"
L-SC-0004	7/8"	1-5/16"	3-1/4"	3/4"
L-SC-0005	15/16"	1-7/16"	4-1/4"	7/8"
L-SC-0006	1"	2-1/8"	4-5/8"	1"

TWISTED CLEVISES



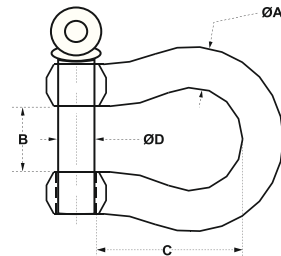
Part Number	Body Dia. ØA (inches)	Clevis Opening B (inches)	Usable Length C (inches)	Pin Dia. ØD (inches)
L-TC-0017	5/8"	7/8"	3"	1/21"
L-TC-0018	3/4"	1-5/16"	3-1/2"	5/8"
L-TC-0019	7/8"	1-5/16"	3"	3/4"
L-TC-0020	7/8"	1-5/16"	3-7/8"	3/4"
L-TC-0021	15/16"	1-7/16"	4-1/4"	7/8"
L-TC-0022	1"	2-1/8"	5"	1"

UTILITY CLEVISES



Part Number	Body Dia. ØA (inches)	Clevis Opening B (inches)	Usable Length C (inches)	Pin Dia. ØD (inches)
L-UC-0033	1/4"	15/32"	7/8"	5/16"
L-UC-0034	5/16"	17/32"	1"	3/8"
L-UC-0035	3/8"	21/32"	1-1/4"	7/16"
L-UC-0035	7/16"	23/32"	1-1/2"	1/2"
L-UC-0036	1/2"	13/16"	1-11/16"	5/8"
L-UC-0037	5/8"	1-1/16"	2"	3/4"

FARM CLEVISES



Part Number	Body Dia. ØA (inches)	Clevis Opening B (inches)	Usable Length C (inches)	Pin Dia. ØD (inches)
L-FC-0048	1/4"	15/32"	1-1/8"	5/16"
L-FC-0049	5/16"	17/32"	1-1/4"	3/8"
L-FC-0050	3/8"	23/32"	1-7/16"	7/16"
L-FC-0051	7/16"	3/4"	1-11/16"	1/2"
L-FC-0052	1/2"	13/16"	1-15/16"	5/8"
L-FC-0053	5/8"	1-1/16"	2-1/2"	3/4"
L-FC-0054	3/4"	1-1/4"	3"	7/8"
L-FC-0055	7/8"	1-7/16"	3-1/4"	1"
L-FC-0056	1"	1-11/16"	3-3/4"	1-1/8"
L-FC-0057	1-1/8"	1-13/16"	4-1/4"	1-1/4"
L-FC-0058	1-1/4"	2"	4-1/2"	1-3/8"



Implements Parts



I-EB-0001

Euro Bracket



I-EB-0002

Euro Bracket Hooks



I-EB-0003

Euro Bracket Hooks



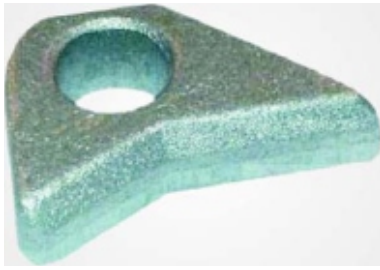
I-EB-0004

Euro Bracket Arm



I-LB-0005

Loader Bracket



I-LP-0006

Eye



I-HK-0007

Hook



I-CK-0008

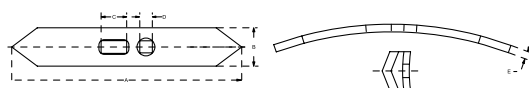
Conversion Kit (Pair)



I-HB-0009

Flail Hammer Blade

CULTIVATOR POINTS / REVERSIBLE POINTS



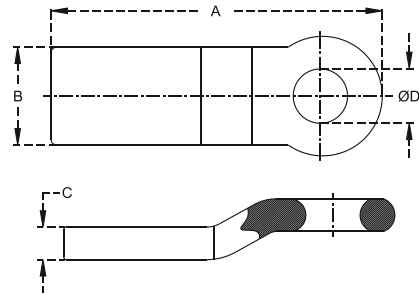
Part Number	Dim. A (mm)	Dim. B (mm)	Dim. C (mm)	Dim. D (mm)	Dim. E (mm)
I-CLP-0001	285	50.8	36	14	7
I-CLP-0002	269	50.8	36	12	6.3
I-CLP-0003	278	50.8	25	14	9.5
I-CLP-0004	212	63.5	25	14	9.5
I-CLP-0005	190	40	-	11.5	5
I-CLP-0006	285	51	32	10.5	9.5
I-CLP-0007	318	51	32	12.7	16
I-CLP-0008	312	40	32	12.7	12.7
I-CLP-0009	382	51	14	14	16
I-CLP-0010	408	51	32	14	16
I-CLP-0011	281	51	14.00	14	10
I-CLP-0012	272	63	25.2x12	25.2x12	8

- Black Painted or Trivalent Zinc Plating as per European Standards.
- Available in any size as per Customer's requirements.
- Heat Treated.



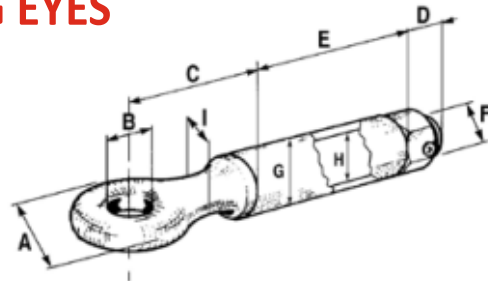
Truck Trailer Parts

HITCH EYE



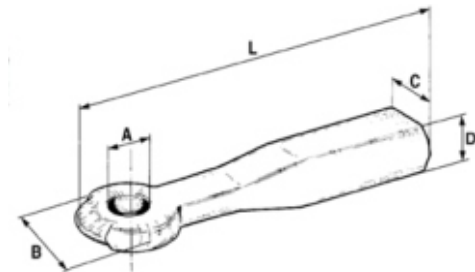
Part Number	Dim. ØA (mm)	Dim. B (mm)	Dim. C (mm)	Dim. ØD (mm)	Type
T-HE-0001	305	90	29	50	Cranked
T-HE-0002	305	90	29	50	Straight
T-HE-0003	305	90	38	50	Straight

TOWING EYES



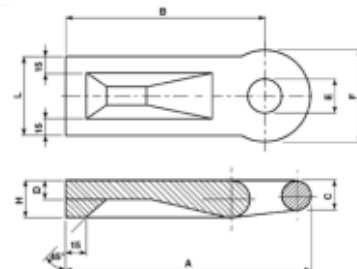
Part Number	Towable Max Load	Vertical Load	Live Load	A	B	C	D	E	F	G
T-TE-0014	—	—	—	84	29	100	30	109	M24	42
T-TE-0015	—	—	—	84	30	98		109		—
T-TE-0016	6000	—	1100	1047	45	96	24	150	M30	51
T-TE-0017	6000	—	2300	105	45	98	33	146.5	M33	63
T-TE-0018	12000	—	2090	112	45	98	33	146.5	M33	63
T-TE-0019	17000	3000	—	131	52	110	60	150	M42	82
T-TE-0020	14000	1700	—	122	52	90	33	135	M33	60
T-TE-0021	6000	—	—	95	35	110	33	145	M33	60
T-TE-0022	3000	250	1000	62	22	90	24	110	M24	42
T-TE-0023	6000	500	3000	95	35	110	26	145	M33	60
T-TE-0024	6000	1500	4500	95	35	110	26	145	M33	60
T-TE-0025	12000	—	—	109	45	130	33	150	M33	63.5
T-TE-0026	14000	2000	5050	120	50	150	36	150	M36	70
T-TE-0027	14000	2000	5750	120	50	150	39	145	M39	76
T-TE-0028	20000	—	—	152	68	170	39	150	M39	76
T-TE-0029	20000	2500	8800	160	76.2	190	48	170	M48	89
T-TE-0030	20000	2500	9200	152	68	170	45	170	M45x3	89

TOWING EYES DIN



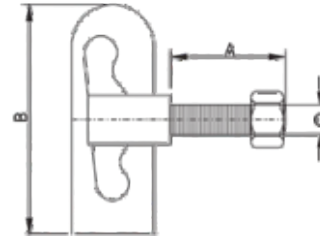
Part Number	Towable Max Load	Vertical Load	A	B	C	D	L
T-TED-0041	3000	450	40	100	40	40	380
T-TED-0042	7000	1000	40	100	50	50	350
T-TED-0043	10000	1450	40	100	55	65	380

TOWING EYES ENGLISH TYPE



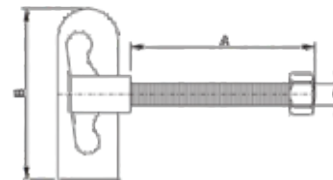
Part Number	Towable Max Load	Vertical Load	A	B	C	D	E	G	H	L
T-TEE-0054	20000	2300	300	245	30	20	50	110	40	100

DROP CLOSURE WITH SHORT SCREW



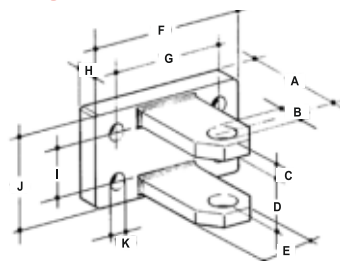
Part Number	A	B	C
T-TEE-0065	35	70	M112

DROP CLOSURE WITH LONG SCREW



Part Number	A	B	C
T-TEE-0076	76	70	1/2" UNF

FIX TOWING HITCH



Part Number	A	B	C	D	E	F	G	H	I	J	K
T-TH-0087	100	29.5	15	58	70	160	120	15	55	100	16.5

D - RING



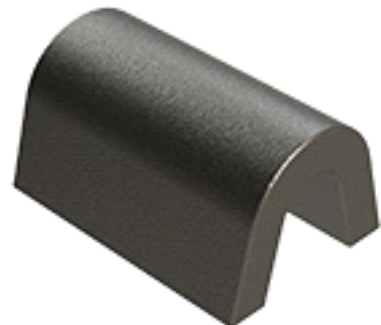
- Screw pin shackle type used for multiple hitches and crawler tractors.
- Do not exceed working load limit.
- Farm hardware is not for lifting.

Part Number	Model	Dim. ØA (Inches)	Dim. B (Inches)	Dim. C (Inches)	Clip Style	Max. Capacity S.W.L.	M.B.S.	Weight lbs
T-DR-0098	3/8" D-Ring	3/8"	2-5/8"	2"	A	3,000	—	0.50
T-DR-0099	1/2" D-Ring	1/2"	2-1/4"	2-1/2"	A or B	4,000	12,000	1.00
T-DR-0100	5/8" D-Ring	5/8"	3"	3"	A or B	6,000	19,000	2.00
T-DR-0101	5/8" D-Ring	5/8"	2-3/4"	3-1/2"	A or B	6,000	19,000	2.25
T-DR-0102	3/4" D-Ring	3/4"	3"	3"	A	9,000	27,000	4.25
T-DR-0103	1" D-Ring	1"	3"	3"	A or B	15,000	47,000	4.50
T-DR-0104	1" D-Ring	1"	3"	4"	A or B	15,000	47,000	5.00
T-DR-0105	1" D-Ring Bent at 50	1"	5"	6"	—	15,000	47,000	5.00

LASHING CLIP FOR D RING (FORGED)

- Screw pin shackle type used for multiple hitches and crawler tractors.
- Do not exceed working load limit.
- Farm hardware is not for lifting.

Part Number	Dim. A (Inches)	Dim. B (Inches)	Dim. C (Inches)	Dim. D (Inches)	Weight lbs
T-LC-0116	1-1/8"	2"	3/8"	3/8"	1.00
T-LC-0117	1-1/8"	2-1/4"	1-1/8"	1/2"	1.10
T-LC-0118	3/4"	1-7/8"	3/4"	3/8"	0.66
T-LC-0119	7/8"	1-7/8"	7/8"	3/8"	0.60





Combine Parts



Part Number CP-7053

OE Ref. No. H213507

Colour Clear Lacquer Coated

Material EN8D / SAE1045

Heat Treatment Induction Hard Cutting Edges, Double Hard



Part Number CP-8933

OE Ref. No. H213398

Colour Clear Lacquer Coated

Material EN8D / SAE1045

Heat Treatment Induction Hard Cutting Edges, Double Hard



Part Number CP-8053

OE Ref. No. H213507

Colour Clear Lacquer Coated

Material EN8D / SAE1045

Heat Treatment Induction Hard Cutting Edges, Double Hard



Part Number	CP-5043
OE Ref. No.	H213408
Colour	Clear Lacquer Coated
Material	EN8D / SAE1045
Heat Treatment	Induction Hard Cutting Edges, Double Hard



Part Number	CP-K101
OE Ref. No.	
Colour	Black Coated
Material	EN8D / SAE1045
Heat Treatment	Double Hard



Part Number	CP-215
OE Ref. No.	
Colour	Clear Lacquer Coated
Material	EN8D / SAE1045
Heat Treatment	Induction Hard Cutting Edges



Part Number	CP-379720
OE Ref. No.	80379720
Colour	Yellow Coated
Material	EN8D / SAE1045
Heat Treatment	Induction Hard Cutting Edges, Double Hard



Part Number	CP-245
OE Ref. No.	748178
Colour	Black Coated
Material	EN8D / SAE1045
Heat Treatment	Induction Hard Cutting Edges



Part Number	CP-626295.1
OE Ref. No.	676235.4
Colour	Black Coated
Material	EN8D / SAE1045
Heat Treatment	Induction Hard Cutting Edges, Double Hard



Part Number	CP-231
OE Ref. No.	10531M1
Colour	Clear Lacquer Coated
Material	EN8D / SAE1045
Heat Treatment	Induction Hard Cutting Edges



Part Number	CP-1183
OE Ref. No.	118344
Colour	Black Coated
Material	EN8D / SAE1045
Heat Treatment	Induction Hard Cutting Edges, Double Hard



Part Number	CP-225
OE Ref. No.	71341601
Colour	JD Green Coated
Material	EN8D / SAE1045
Heat Treatment	Induction Hard Cutting Edges



Part Number	CP-250
OE Ref. No.	49312
Colour	Black Coated
Material	EN8D / SAE1045
Heat Treatment	Induction Hard Cutting Edges



Part Number	CP-215H
OE Ref. No.	683994M1
Colour	Clear Lacquer Coated
Material	EN8D / SAE1045
Heat Treatment	Induction Hard Cutting Edges, Double Hard



Part Number	CP-270
OE Ref. No.	613838R3
Colour	Red Coated
Material	EN8D / SAE1045
Heat Treatment	Induction Hard Cutting Edges



Part Number	CP-275
OE Ref. No.	290385
Colour	Clear Lacquer Coated
Material	EN8D / SAE1045
Heat Treatment	Induction Hard Cutting Edges



Part Number	CP-118344
OE Ref. No.	
Colour	Clear Lacquer Coated
Material	EN8D / SAE1045
Heat Treatment	Induction Hard Cutting Edges



Part Number	CP-290
OE Ref. No.	86544410
Colour	Black Coated
Material	EN8D / SAE1045
Heat Treatment	Induction Hard Cutting Edges



Part Number	CP-240
OE Ref. No.	H61954
Colour	Clear Lacquer Coated
Material	EN8D / SAE1045
Heat Treatment	Induction Hard Cutting Edges, Double Hard



Part Number	CP-11228
OE Ref. No.	
Colour	JD Green Coated
Material	EN8D / SAE1045
Heat Treatment	Induction Hard Cutting Edges



Part Number	CP-299
OE Ref. No.	1307299C1-C2
Colour	Clear Lacquer Coated
Material	EN8D / SAE1045
Heat Treatment	Induction Hard Cutting Edges



Part Number	CP-218H
OE Ref. No.	219190
Colour	Clear Lacquer Coated
Material	EN8D / SAE1045
Heat Treatment	Induction Hard Cutting Edges, Double Hard



Part Number	CP-210
OE Ref. No.	483500R3
Colour	Clear Lacquer Coated
Material	EN8D / SAE1045
Heat Treatment	Induction Hard Cutting Edges



Part Number CP-C01 / 218547

OE Ref. No.

Colour JD Green Coated

Material EN8D / SAE1045

Heat Treatment Double Hard

Bolt Grade 10.9



Part Number CP-C02 / 218548

OE Ref. No.

Colour JD Green Coated

Material EN8D / SAE1045

Heat Treatment Double Hard

Bolt Grade 10.9



ALLIED BROTHERS
INTERNATIONAL

Contact Us

 **+91 76268 70891**

 **info@alliedbros.com**

 **HL-172, Phase-III, Focal Point, Ludhiana, Punjab, India.**

 **www.alliedbros.com**